

**RAB7L1 monoclonal antibody**

Catalog: MB66716

Host: Mouse

Reactivity: Human

**BackGround:**

Rab29 (Rab7L1) is a member of the Ras GTPase super-family of small monomeric G proteins responsible for regulation of intracellular membrane trafficking. Rab29 is involved in maintaining the integrity of the trans-Golgi network (TGN) and has been shown to play a role in the retrograde trafficking of mannose-6-phosphate receptors (M6PR) to the TGN. Rab29 is a substrate of LRRK2, a kinase associated with Parkinson's disease (PD), and is one of five genes encoded within the PD-linked PARK16 locus. It has been shown that Rab29 recruits LRRK2 to the TGN and stimulates its kinase activity. Mimicking LRRK2 phosphorylation of Rab29 at Thr71 and Ser72 appears to suppress activation of LRRK2. Thus, Rab29 acts as a regulator of LRRK2, controlling its activation and localization.

**Product:**

Mouse IgG1 kappa. Liquid in PBS, pH 7.3, 30% glycerol, and 0.01% sodium azide.

**Molecular Weight:**

~ 23 kDa

**Swiss-Prot:**

O14966

**Purification&Purity:**

This antibody is purified through a protein G column.

**Applications:**

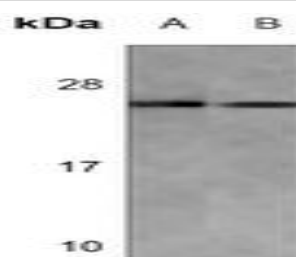
WB (1/500 - 1/1000)

**Storage&Stability:**

Store at 4 °C short term. Aliquot and store at -20 °C long term. Avoid freeze-thaw cycles.

**Specificity:**

Recognizes endogenous levels of RAB7L1 protein.

**DATA:**

Western blot analysis of RAB7L1 expression in Jurkat (A), A431 (B) whole cell lysates.

**Note:**

For research use only, not for use in diagnostic procedure.

**Bioworld Technology, Inc.**

Add: 1660 South Highway 100, Suite 500 St. Louis Park, MN 55416, USA.

Email: [info@bioworld.com](mailto:info@bioworld.com)

Tel: 6123263284

Fax: 6122933841

**Bioworld technology, co. Ltd.**

Add: No 9, weidi road Qixia District Nanjing, 210046, P. R. China.

Email: [info@biogot.com](mailto:info@biogot.com)

Tel: 0086-025-68037686

Fax: 0086-025-68035151