

## GCTM-2 monoclonal antibody

Catalog: MB66709

Host: Mouse

Reactivity: Human

### BackGround:

TRA-1-60 and TRA-1-81 antibodies detect antigens present on the surface of human stem, teratocarcinoma, and embryonic germ cells. TRA-1-60(S) reacts with a neuraminidase sensitive epitope of a proteoglycan, while TRA-1-81 reacts with a neuraminidase insensitive epitope on the same antigen. Recently this antigen has been proposed to be a form of the protein podocalyxin. TRA-1-60 is also detected in the serum of patients with germ cell tumors.

### Product:

Mouse IgG1. Supplied in crude ascites with 0.01% sodium azide.

### Molecular Weight:

~ 57 kDa

### Swiss-Prot:

O00592

### Purification&Purity:

### Applications:

WB (1/1000 - 1/5000), IF/ICC (1/10 - 1/50)

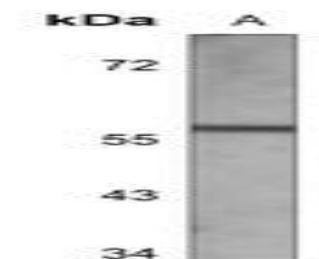
### Storage&Stability:

Store at 4 °C short term. Aliquot and store at -20 °C long term. Avoid freeze-thaw cycles.

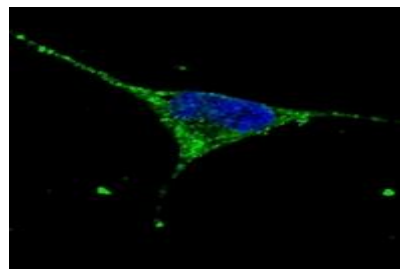
### Specificity:

Recognizes endogenous levels of GCTM-2 protein.

### DATA:



Western blot analysis of GCTM-2 expression in A549 (A) whole cell lysates.



Immunofluorescent analysis of GCTM-2 staining in SHSY5Y cells. Formalin-fixed cells were permeabilized with 0.1% Triton X-100 in TBS for 5-10 minutes and blocked with 3% BSA-PBS for 30 minutes at room temperature. Cells were probed with the primary antibody in 3% BSA-PBS and incubated overnight at 4 °C in a humidified chamber. Cells were washed with PBST and incubated with a AF488-conjugated secondary antibody (green) in PBS at room temperature in the dark. DAPI was used to stain the cell nuclei (blue).

### Note:

For research use only, not for use in diagnostic procedure.

### Bioworld Technology, Inc.

Add: 1660 South Highway 100, Suite 500 St. Louis Park, MN 55416, USA.

Email: [info@bioworld.com](mailto:info@bioworld.com)

Tel: 6123263284

Fax: 6122933841

### Bioworld technology, co. Ltd.

Add: No 9, weidi road Qixia District Nanjing, 210046, P. R. China.

Email: [info@biogot.com](mailto:info@biogot.com)

Tel: 0086-025-68037686

Fax: 0086-025-68035151