

Gamma-enolase monoclonal antibody

Catalog: MB66695

Host: Mouse

Reactivity: Human, Mouse, Rat

BackGround:

Enolase is a glycolytic enzyme that is involved in the conversion of 2-phosphoglycerate to phosphoenolpyruvate. Mammalian enolase has three subunits: α , β , and γ , that can form homo and heterodimers. Homodimers of γ enolase are neuronal-specific. Research studies have shown elevated levels of neuro-specific enolase-2 in neuroblastoma and small-cell lung cancer.

Product:

Liquid in PBS containing 50% glycerol, 0.5% BSA and 0.02% sodium azide, pH 7.3.

Molecular Weight:

~ 47 kDa

Swiss-Prot:

P09104

Purification&Purity:

The antibody was purified by immunogen affinity chromatography.

Applications:

WB (1/500 - 1/1000), E (1/5000 - 1/10000)

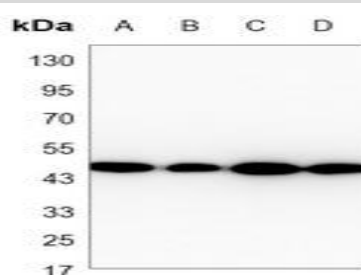
Storage&Stability:

Store at 4 °C short term. Aliquot and store at -20 °C long term. Avoid freeze-thaw cycles.

Specificity:

Recognizes endogenous levels of Gamma-enolase protein.

DATA:



Western blot analysis of Gamma-enolase expression in SHSY5Y (A), U87MG (B), rat brain (C), mouse brain (D) whole cell lysates.

Note:

For research use only, not for use in diagnostic procedure.

Bioworld Technology, Inc.

Add: 1660 South Highway 100, Suite 500 St. Louis Park, MN 55416, USA.

Email: info@bioworld.com

Tel: 6123263284

Fax: 6122933841

Bioworld technology, co. Ltd.

Add: No 9, weidi road Qixia District Nanjing, 210046, P. R. China.

Email: info@biogol.com

Tel: 0086-025-68037686

Fax: 0086-025-68035151