

## Gamma-enolase monoclonal antibody

Catalog: MB66694

Host: Mouse

Reactivity: Human, Mouse, Rat

### BackGround:

Enolase is a glycolytic enzyme that is involved in the conversion of 2-phosphoglycerate to phosphoenolpyruvate. Mammalian enolase has three subunits:  $\alpha$ ,  $\beta$ , and  $\gamma$ , that can form homo and heterodimers. Homodimers of  $\gamma$  enolase are neuronal-specific. Research studies have shown elevated levels of neuro-specific enolase-2 in neuroblastoma and small-cell lung cancer.

### Product:

Liquid in PBS containing 50% glycerol, 0.5% BSA and 0.02% sodium azide, pH 7.3.

### Molecular Weight:

~ 47 kDa

### Swiss-Prot:

P09104

### Purification&Purity:

The antibody was purified by immunogen affinity chromatography.

### Applications:

WB (1/500 - 1/1000), E (1/5000 - 1/10000)

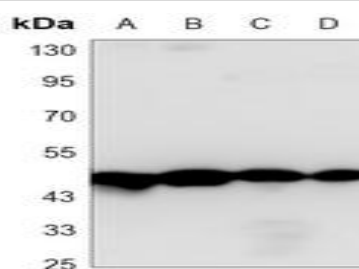
### Storage&Stability:

Store at 4 °C short term. Aliquot and store at -20 °C long term. Avoid freeze-thaw cycles.

### Specificity:

Recognizes endogenous levels of Gamma-enolase protein.

### DATA:



Western blot analysis of Gamma-enolase expression in SHSY5Y (A), U87MG (B), rat brain (C), mouse brain (D) whole cell lysates.

### Note:

For research use only, not for use in diagnostic procedure.

### Bioworld Technology, Inc.

Add: 1660 South Highway 100, Suite 500 St. Louis Park, MN 55416, USA.

Email: [info@bioworld.com](mailto:info@bioworld.com)

Tel: 6123263284

Fax: 6122933841

### Bioworld technology, co. Ltd.

Add: No 9, weidi road Qixia District Nanjing, 210046, P. R. China.

Email: [info@biogol.com](mailto:info@biogol.com)

Tel: 0086-025-68037686

Fax: 0086-025-68035151