

ALPP monoclonal antibody

Catalog: MB66674

Host: Mouse

Reactivity: Human

BackGround:

Mammalian alkaline phosphatases (APs) are highly conserved zinc-containing allosteric enzymes that are able to hydrolyze and transphosphorylate a wide range of compounds. There are four known human alkaline phosphatase isozymes: TNAP (tissue-nonspecific; bone/liver/kidney), ALPP (placental), ALPP2 (germ cell), and ALPI (intestinal). Placental alkaline phosphatase (ALPP) is bound to the plasma membrane via a glycosyl-phosphatidylinositol (GPI) anchor. It is expressed primarily in the placenta and may be involved in trans-placental IgG transport. ALPP has been found to be overexpressed on the surface of several different types of solid tumor cells and elevated serum concentrations of ALPP and ALPP-like enzymes has been found to be associated with ovarian, cervical, and testicular cancer.

Product:

Liquid in PBS containing 50% glycerol, 0.5% BSA and 0.02% sodium azide, pH 7.3.

Molecular Weight:

~ 70 kDa

Swiss-Prot:

P05187

Purification&Purity:

The antibody was purified by immunogen affinity chromatography.

Applications:

WB (1/500 - 1/1000)

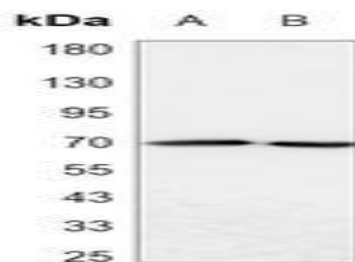
Storage&Stability:

Store at 4 °C short term. Aliquot and store at -20 °C long term. Avoid freeze-thaw cycles.

Specificity:

Recognizes endogenous levels of ALPP protein.

DATA:



Western blot analysis of ALPP expression in HepG2 (A), HeLa (B) whole cell lysates.

Note:

For research use only, not for use in diagnostic procedure.

Bioworld Technology, Inc.

Add: 1660 South Highway 100, Suite 500 St. Louis Park, MN 55416, USA.

Email: info@bioworld.com

Tel: 6123263284

Fax: 6122933841

Bioworld technology, co. Ltd.

Add: No 9, weidi road Qixia District Nanjing, 210046, P. R. China.

Email: info@biogol.com

Tel: 0086-025-68037686

Fax: 0086-025-68035151