

Alpha-enolase monoclonal antibody

Catalog: MB66612

Host: Mouse

Reactivity: Human, Mouse, Rat, Monkey

BackGround:

Enolase is an important glycolytic enzyme involved in the interconversion of 2-phosphoglycerate to phosphoenolpyruvate. Mammalian enolase exists as three subunits: enolase-1 (α -enolase), enolase-2 (γ -enolase) and enolase-3 (β -enolase) that can form both homo- and heterodimers. Expression of the enolase isoforms differs in a tissue specific manner. Enolase-1 plays a key role in anaerobic metabolism under hypoxic conditions and may act as a cell surface plasminogen receptor during tissue invasion. Abnormal expression of enolase-1 is associated with tumor progression in some cases of breast and lung cancer. Alternatively, an enolase-1 splice variant (MBP-1) binds the c-myc promoter p2 and may function as a tumor suppressor. For this reason enolase-1 is considered as a potential therapeutic target in the treatment of some forms of cancer.

Product:

Liquid in PBS containing 50% glycerol, 0.5% BSA and 0.02% sodium azide, pH 7.3.

Molecular Weight:

~ 47 kDa

Swiss-Prot:

P06733

Purification&Purity:

The antibody was purified by immunogen affinity chromatography.

Applications:

WB (1/500 - 1/1000)

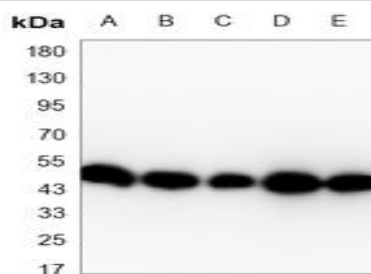
Storage&Stability:

Store at 4 °C short term. Aliquot and store at -20 °C long term. Avoid freeze-thaw cycles.

Specificity:

Recognizes endogenous levels of Alpha-enolase protein.

DATA:



Western blot analysis of Alpha-enolase expression in T47D (A), NIH3T3 (B), COS7 (C), C6 (D), HeLa (E) whole cell lysates.

Note:

For research use only, not for use in diagnostic procedure.

Bioworld Technology, Inc.

Add: 1660 South Highway 100, Suite 500 St. Louis Park, MN 55416, USA.

Email: info@bioworld.com

Tel: 6123263284

Fax: 6122933841

Bioworld technology, co. Ltd.

Add: No 9, weidi road Qixia District Nanjing, 210046, P. R. China.

Email: info@biogot.com

Tel: 0086-025-68037686

Fax: 0086-025-68035151