

XRCC1 monoclonal antibody

Catalog: MB66594

Host: Mouse

Reactivity: Human

BackGround:

The X-ray repair cross complementing protein 1 (XRCC1) is a DNA repair protein important in both single strand break repair and base excision repair following damage from ionizing radiation and alkylating agents. XRCC1 acts as a scaffold protein to coordinate DNA abasic site repair through interaction with several other repair proteins. At least eight XRCC1 protein partners have been identified, including the polynucleotide kinase PNK, DNA ligase III, poly (ADP-ribose) polymerase, and PCNA. Mutations and polymorphisms in the XRCC1 gene serve as diagnostic markers and are associated with elevated risk of various forms of cancers.

Product:

Liquid in PBS containing 50% glycerol, 0.5% BSA and 0.02% sodium azide, pH 7.3.

Molecular Weight:

~ 82 kDa

Swiss-Prot:

P18887

Purification&Purity:

The antibody was purified by immunogen affinity chromatography.

Applications:

WB (1/500 - 1/1000)

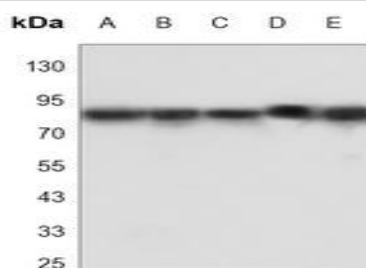
Storage&Stability:

Store at 4 °C short term. Aliquot and store at -20 °C long term. Avoid freeze-thaw cycles.

Specificity:

Recognizes endogenous levels of XRCC1 protein.

DATA:



Western blot analysis of XRCC1 expression in Raji (A), K562 (B), HeLa (C), Jurkat (D), THP1 (E) whole cell lysates.

Note:

For research use only, not for use in diagnostic procedure.

Bioworld Technology, Inc.

Add: 1660 South Highway 100, Suite 500 St. Louis Park, MN 55416, USA.

Email: info@bioworld.com

Tel: 6123263284

Fax: 6122933841

Bioworld technology, co. Ltd.

Add: No 9, weidi road Qixia District Nanjing, 210046, P. R. China.

Email: info@biogol.com

Tel: 0086-025-68037686

Fax: 0086-025-68035151