

SWAP-70 monoclonal antibody

Catalog: MB66544

Host: Mouse

Reactivity: Human, Mouse, Rat, Monkey

BackGround:

SWAP70 is a Rac family guanine nucleotide exchange factor (GEF). It is highly expressed by activated B cells. Following B cell stimulation, SWAP70 has been observed to translocate from the cytoplasm to the nucleus, where it plays a role in class switching, as well as to the membrane, where it associates with the B cell receptor. SWAP70 also plays a role in migration of B cells and other immune cell types including dendritic cells, eosinophils, and mast cells. Mice deficient in both SWAP70 and a related protein, DEF6, develop lupus-like autoimmunity due to misregulation of IRF4 in B cells and T cells leading to increased IL21 production and responsiveness.

Product:

Liquid in PBS containing 50% glycerol, 0.5% BSA and 0.02% sodium azide, pH 7.3.

Molecular Weight:

~ 65 kDa

Swiss-Prot:

Q9UH65

Purification&Purity:

The antibody was purified by immunogen affinity chro-

matography.

Applications:

WB (1/500 - 1/1000), IP (1/10 - 1/50)

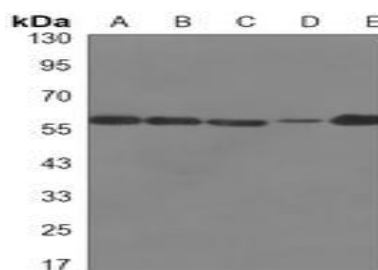
Storage&Stability:

Store at 4 °C short term. Aliquot and store at -20 °C long term. Avoid freeze-thaw cycles.

Specificity:

Recognizes endogenous levels of SWAP-70 protein.

DATA:



Western blot analysis of SWAP-70 expression in COS7 (A), 293T (B), C6 (C), NIH3T3 (D), HeLa (E) whole cell lysates.

Note:

For research use only, not for use in diagnostic procedure.

Bioworld Technology, Inc.

Add: 1660 South Highway 100, Suite 500 St. Louis Park, MN 55416, USA.

Email: info@bioworld.com

Tel: 6123263284

Fax: 6122933841

Bioworld technology, co. Ltd.

Add: No 9, weidi road Qixia District Nanjing, 210046, P. R. China.

Email: info@biogot.com

Tel: 0086-025-68037686

Fax: 0086-025-68035151