

CALU monoclonal antibody

Catalog: MB66536

Host: Mouse

Reactivity: Human, Mouse

BackGround:

Calumenin belongs to the CREC family of proteins that also contains reticulocalbin, ERC-55/TCBP-49/E6BP, Cab45, and crocalbin/CBP-50. These EF-hand proteins localize to the endoplasmic reticulum (ER) and are involved in the secretory pathway in mammalian cells. Calumenin exists as two isoforms corresponding to alternatively spliced variants of the CALU gene. Calumenin has been shown to localize to the ER via a carboxy terminal HDEF ER retention signal, and undergoes secretion after trafficking through the secretory pathway. Secreted calumenin plays a role in amyloidosis by interacting with serum amyloid P component. Calumenin is also a chaperone for mutants of the cystic fibrosis transmembrane conductance regulator (CFTR). Researchers performing a proteomics analysis of endometrial cancer identified calumenin as a potential target for endometrial carcinoma.

Product:

Liquid in PBS containing 50% glycerol, 0.5% BSA and 0.02% sodium azide, pH 7.3.

Molecular Weight:

~ 47 kDa

Swiss-Prot:

O43852

Purification&Purity:

The antibody was purified by immunogen affinity chromatography.

Applications:

WB (1/500 - 1/1000)

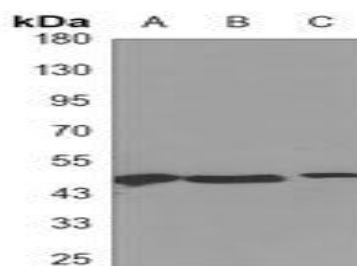
Storage&Stability:

Store at 4 °C short term. Aliquot and store at -20 °C long term. Avoid freeze-thaw cycles.

Specificity:

Recognizes endogenous levels of CALU protein.

DATA:



Western blot analysis of CALU expression in SW480 (A), mouse intestine (B), A431 (C) whole cell lysates.

Note:

For research use only, not for use in diagnostic procedure.

Bioworld Technology, Inc.

Add: 1660 South Highway 100, Suite 500 St. Louis Park, MN 55416, USA.

Email: info@bioworld.com

Tel: 6123263284

Fax: 6122933841

Bioworld technology, co. Ltd.

Add: No 9, weidi road Qixia District Nanjing, 210046, P. R. China.

Email: info@biogot.com

Tel: 0086-025-68037686

Fax: 0086-025-68035151