

L1RE1 Rabbit monoclonal antibody

Catalog: MB66443

Host: Rabbit

Reactivity: Human

BackGround:

LINE-1, also known as L1, is a non-long terminal repeat (non-LTR) retrotransposon with hundreds of thousands of copies in the human genome. Like all non-LTRs, L1 replicates by target-primed reverse transcription (TPRT). The L1 retrotransposon encodes two proteins critical to this process: ORF1p and ORF2p. ORF2p contributes to endonuclease and reverse transcriptase activity, while ORF1p acts as a nucleic acid chaperone that binds RNA. Many types of cancers have been shown to have L1 insertions within tumor suppressor genes, disrupting their expression and contributing to tumorigenesis.

While normally silenced, ORF1p is expressed in many types of cancers. Recently, it has been found that ORF1p can become phosphorylated and that this event impacts its ability to promote retrotransposition. This creates a novel dynamic to which the host could actively affect L1 replication through various signaling cascades.

Product:

Liquid in 50mM Tris-Glycine (pH 7.4), 0.15M NaCl, 50% Glycerol, 0.01% Sodium azide and 0.05% BSA.

Molecular Weight:

~ 40 kDa

Swiss-Prot:

Q9UN81

Purification&Purity:

The antibody was purified by immunogen affinity chromatography.

Applications:

WB (1/500 - 1/1000), IP (1/10 - 1/50)

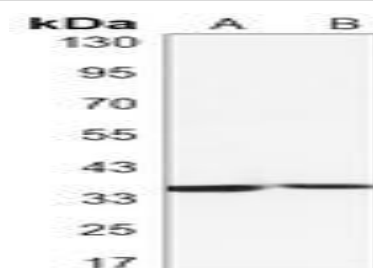
Storage&Stability:

Store at 4 °C short term. Aliquot and store at -20 °C long term. Avoid freeze-thaw cycles.

Specificity:

Recognizes endogenous levels of L1RE1 protein.

DATA:



Western blot analysis of L1RE1 expression in Hela (A), A549 (B) whole cell lysates.

Note:

For research use only, not for use in diagnostic procedure.

Bioworld Technology, Inc.

Add: 1660 South Highway 100, Suite 500 St. Louis Park, MN 55416, USA.

Email: info@bioworld.com

Tel: 6123263284

Fax: 6122933841

Bioworld technology, co. Ltd.

Add: No 9, weidi road Qixia District Nanjing, 210046, P. R. China.

Email: info@biogot.com

Tel: 0086-025-68037686

Fax: 0086-025-68035151