

## IMPDH2 Rabbit monoclonal antibody

Catalog: MB66440

Host: Rabbit

Reactivity: Human, Mouse, Rat

### BackGround:

Inosine-5'-monophosphate dehydrogenase (IMPDH) catalyzes the conversion of IMP to XMP, the first and rate-limiting step of guanine nucleotide biosynthesis. The isozymes IMPDH1 and IMPDH2 are encoded by two distinct genes. Research studies show that IMPDH2 is over-expressed in glioblastoma. In glioblastoma, IMPDH2-mediated GTP biosynthesis is essential for rRNA and tRNA synthesis and the formation of enlarged and irregular nucleoli. In addition, IMPDH1 and IMPDH2 double knockout leads to significant inhibition of tumor growth in an orthotopic glioblastoma model. Furthermore, IMPDH1 and IMPDH2 expression is upregulated in small cell lung cancer cells with low expression of ASCL1 transcription factor (ASCL1Low). Suppression of IMPDH activity inhibits ASCL1Low small cell lung cancer growth.

### Product:

Liquid in 50mM Tris-Glycine (pH 7.4), 0.15M NaCl, 50% Glycerol, 0.01% Sodium azide and 0.05% BSA.

### Molecular Weight:

~ 55 kDa

### Swiss-Prot:

P12268

### Purification&Purity:

The antibody was purified by immunogen affinity chromatography.

### Applications:

WB (1/500 - 1/1000), IHC (1/50 - 1/100), IF/ICC (1/50 - 1/100), IP (1/10 - 1/50)

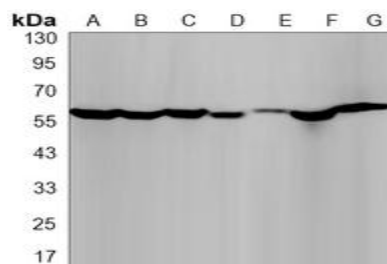
### Storage&Stability:

Store at 4 °C short term. Aliquot and store at -20 °C long term. Avoid freeze-thaw cycles.

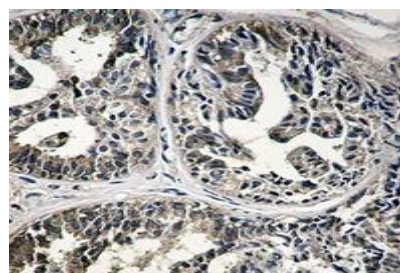
### Specificity:

Recognizes endogenous levels of IMPDH2 protein.

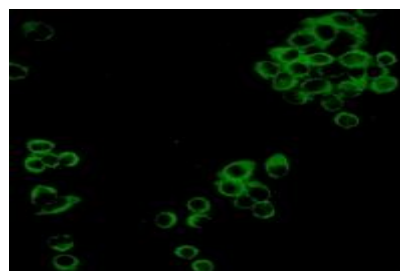
### DATA:



Western blot analysis of IMPDH2 expression in NIH3T3 (A), mouse liver (B), Hela (C), A549 (D), HL60 (E), U2OS (F), C6 (G) whole cell lysates.



Immunohistochemical analysis of IMPDH2 staining in human breast carcinoma formalin fixed paraffin embedded tissue section. The section was pre-treated using heat mediated antigen retrieval with sodium citrate buffer (pH 6.21). The section was then incubated with the antibody at room temperature and detected using an HRP conjugated compact polymer system. DAB was used as the chromogen. The section was then counterstained with haematoxylin and mounted with DPX.



Immunofluorescent analysis of IMPDH2 staining in HeLa cells. Formalin-fixed cells were permeabilized with 0.1% Triton X-100 in TBS for 5-10 minutes and blocked with 3% BSA-PBS for 30 minutes at room temperature. Cells were probed with the primary antibody in 3%

### Bioworld Technology, Inc.

Add: 1660 South Highway 100, Suite 500 St. Louis Park, MN 55416, USA.

Email: [info@bioworld.com](mailto:info@bioworld.com)

Tel: 6123263284

Fax: 6122933841

### Bioworld technology, co. Ltd.

Add: No 9, weidi road Qixia District Nanjing, 210046, P. R. China.

Email: [info@biogot.com](mailto:info@biogot.com)

Tel: 0086-025-68037686

Fax: 0086-025-68035151



## PRODUCT DATA SHEET

Bioworld Technology, Inc.

BSA-PBS and incubated overnight at 4 °C in a humidified chamber. Cells were washed with PBST and incubated with a AF488-conjugated secondary antibody (green) in PBS at room temperature in the dark.

### Note:

For research use only, not for use in diagnostic procedure.

---

#### Bioworld Technology, Inc.

Add: 1660 South Highway 100, Suite 500 St. Louis Park, MN 55416, USA.

Email: [info@bioworld.com](mailto:info@bioworld.com)

Tel: 6123263284

Fax: 6122933841

#### Bioworld technology, co. Ltd.

Add: No 9, weidi road Qixia District Nanjing, 210046, P. R. China.

Email: [info@biogot.com](mailto:info@biogot.com)

Tel: 0086-025-68037686

Fax: 0086-025-68035151