

Cytochrome P450 2D6 Rabbit monoclonal antibody

Catalog: MB66430

Host: Rabbit

Reactivity: Human

BackGround:

Cytochrome P450 2D6 (CYP2D6) is a member of the cytochrome P450 superfamily of enzymes. CYP2D6 is located in the endoplasmic reticulum where it oxidizes substrates such as drugs and environmental chemicals. CYP2D6 metabolizes more than 25% of current commonly used drugs including antidepressants, antipsychotics, analgesics, beta-adrenergic blocking agents, antiarrhythmics, and antiemetics. The CYP2D6 gene is highly polymorphic in humans, resulting in phenotypes that vary from poor metabolizer to super metabolizer. A patient's CYP2D6 genotype was shown to be a good predictor of drug response and side effects and is thus used to guide treatments. Although abundantly expressed in liver, CYP2D6 is also expressed in other organs including brain. In brain, CYP2D6 and other CYP family members are expressed in a cell-specific, region-specific manner. CYP2D6 functions as a neuroprotective enzyme that increases with age and is induced by nicotine and alcohol.

Product:

Liquid in 50mM Tris-Glycine (pH 7.4), 0.15M NaCl, 50% Glycerol, 0.01% Sodium azide and 0.05% BSA.

Molecular Weight:

~ 50 kDa

Swiss-Prot:

P10635

Purification&Purity:

The antibody was purified by immunogen affinity chromatography.

Applications:

WB (1/500 - 1/1000), IHC (1/50 - 1/100), IF/ICC (1/50 - 1/100)

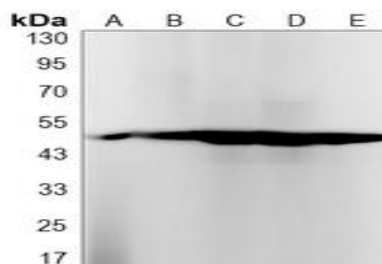
Storage&Stability:

Store at 4 °C short term. Aliquot and store at -20 °C long term. Avoid freeze-thaw cycles.

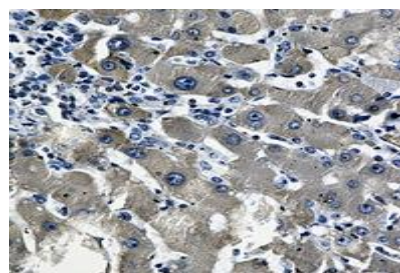
Specificity:

Recognizes endogenous levels of Cytochrome P450 2D6 protein.

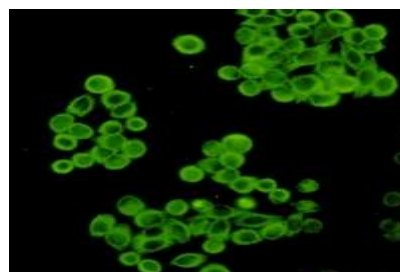
DATA:



Western blot analysis of Cytochrome P450 2D6 expression in Hela (A), A549 (B), HL60 (C), U251 (D), U87MG (E) whole cell lysates.



Immunohistochemical analysis of Cytochrome P450 2D6 staining in human liver cancer formalin fixed paraffin embedded tissue section. The section was pre-treated using heat mediated antigen retrieval with sodium citrate buffer (pH 6.73). The section was then incubated with the antibody at room temperature and detected using an HRP conjugated compact polymer system. DAB was used as the chromogen. The section was then counterstained with haematoxylin and mounted with DPX.



Immunofluorescent analysis of Cytochrome P450 2D6 staining in HeLa cells. Formalin-fixed cells were permeabilized with 0.1% Triton X-100 in TBS for 5-10 minutes and blocked with 3% BSA-PBS for 30 minutes

Bioworld Technology, Inc.

Add: 1660 South Highway 100, Suite 500 St. Louis Park,

MN 55416,USA.

Email: info@bioworld.com

Tel: 6123263284

Fax: 6122933841

Bioworld technology, co. Ltd.

Add: No 9, weidi road Qixia District Nanjing, 210046, P. R. China.

Email: info@biogot.com

Tel: 0086-025-68037686

Fax: 0086-025-68035151



PRODUCT DATA SHEET

Bioworld Technology, Inc.

at room temperature. Cells were probed with the primary antibody in 3% BSA-PBS and incubated overnight at 4 °C in a humidified chamber. Cells were washed with PBST and incubated with a AF488-conjugated

secondary antibody (green) in PBS at room temperature in the dark.

Note:

For research use only, not for use in diagnostic procedure.

Bioworld Technology, Inc.

Add: 1660 South Highway 100, Suite 500 St. Louis Park, MN 55416, USA.

Email: info@bioworld.com

Tel: 6123263284

Fax: 6122933841

Bioworld technology, co. Ltd.

Add: No 9, weidi road Qixia District Nanjing, 210046, P. R. China.

Email: info@biogot.com

Tel: 0086-025-68037686

Fax: 0086-025-68035151