

## KIM1 Rabbit monoclonal antibody

Catalog: MB66410

Host: Rabbit

Reactivity: Human, Mouse, Rat

### BackGround:

T cell Ig- and mucin-domain-containing molecules (TIMs) are a family of transmembrane proteins expressed by various immune cells. TIM-1 (HAVCR1 (hepatitis A virus cellular receptor 1), KIM-1 (kidney injury molecule-1) was originally identified as a receptor for hepatitis A virus. TIM-1 also acts as a costimulatory receptor on T cells and following activation, associates with the TCR complex to upregulate signaling and cytokine production. Another TIM family member, TIM-4, is expressed by antigen presenting cells and is a ligand for TIM-1. TIM-1 expressed by Th1 and Th17 cells was also recently shown to interact with P-selectin to mediate T cell trafficking during inflammation and autoimmune disease. NKT cells also express TIM-1, and engagement of TIM-1 on NKT cells leads to increased production of IL-4, but decreased production of IFN-gamma. TIM-1 is also a receptor for phosphatidylserine exposed by cells undergoing apoptosis. Detection of phosphatidylserine by TIM-1 expressed on NKT cells results in activation, proliferation, and cytokine production. Expression of TIM-1 on regulatory B cells is required for optimal production of IL-10. Mice lacking the TIM-1 mucin domain have decreased production of IL-10 by regulatory B cells, hyperactive T cells, increased levels of inflammatory cytokines, and enhanced severity of autoimmune disease. In addition, TIM-1 polymorphisms are associated with susceptibility to atopic diseases including asthma. Finally, expression of TIM-1 is increased in renal tubular epithelial cells following kidney injury.

### Product:

Liquid in 50mM Tris-Glycine (pH 7.4), 0.15M NaCl,

50% Glycerol, 0.01% Sodium azide and 0.05% BSA.

### Molecular Weight:

~ 50 kDa

### Swiss-Prot:

Q96D42

### Purification&Purity:

The antibody was purified by immunogen affinity chromatography.

### Applications:

WB (1/500 - 1/1000)

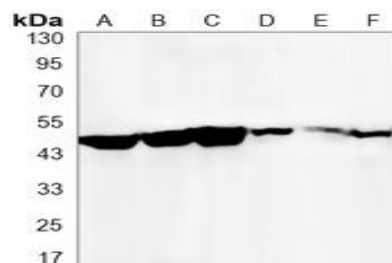
### Storage&Stability:

Store at 4 °C short term. Aliquot and store at -20 °C long term. Avoid freeze-thaw cycles.

### Specificity:

Recognizes endogenous levels of KIM1 protein.

### DATA:



Western blot analysis of KIM1 expression in A549 (A), MCF7 (B), U251 (C), HL60 (D), Raw264.7 (E), PC12 (F) whole cell lysates.

### Note:

For research use only, not for use in diagnostic procedure.

### Bioworld Technology, Inc.

Add: 1660 South Highway 100, Suite 500 St. Louis Park, MN 55416, USA.

 Email: [info@bioworld.com](mailto:info@bioworld.com)

Tel: 6123263284

Fax: 6122933841

### Bioworld technology, co. Ltd.

Add: No 9, weidi road Qixia District Nanjing, 210046, P. R. China.

 Email: [info@biogot.com](mailto:info@biogot.com)

Tel: 0086-025-68037686

Fax: 0086-025-68035151