

NR1D1 Rabbit monoclonal antibody

Catalog: MB66369

Host: Rabbit

Reactivity: Human, Mouse, Rat

BackGround:

Reverse orientation c-erbA gene α (Rev-erb α , EAR-1, or NR1D1) is a widely expressed member of the orphan nuclear receptor family of proteins. Rev-erb α is highly expressed in adipose tissue, skeletal muscle, brain and liver, and regulates cellular proliferation and differentiation. Expression increases during differentiation in adipocytes and ectopic expression of Rev-erb α potentiates the adipocyte differentiation of 3T3-L1 cells. In addition, expression oscillates with circadian rhythm in liver cells and Rev-erb α regulates expression of BMAL1, ApoA-I and ApoC-III, all key regulators of circadian rhythm. Phosphorylation of Rev-erb α Ser55 and Ser59 by GSK-3 β appears to stabilize Rev-erb α protein levels and is important for synchronizing and maintaining the circadian clock. Rev-erb α also regulates inflammation by targeting the NF- κ B responsive genes IL-6 and COX-2. Rev-erb α lacks the activation function 2 domain required for ligand-dependent activation of transcription by other members of the nuclear receptor family; thus it behaves as a constitutive repressor protein, recruiting the nuclear receptor co-repressor (N-CoR)/HDAC3 complex to target genes to repress transcription.

Product:

Liquid in 50mM Tris-Glycine (pH 7.4), 0.15M NaCl, 50% Glycerol, 0.01% Sodium azide and 0.05% BSA.

Molecular Weight:

~ 57 kDa

Swiss-Prot:

P20393

Purification&Purity:

The antibody was purified by immunogen affinity chromatography.

Applications:

WB (1/500 - 1/1000), IF/ICC (1/50 - 1/100)

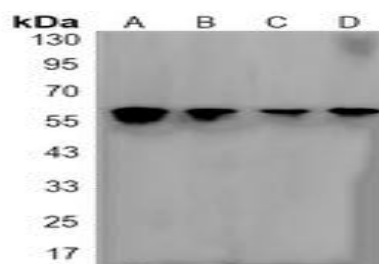
Storage&Stability:

Store at 4 °C short term. Aliquot and store at -20 °C long term. Avoid freeze-thaw cycles.

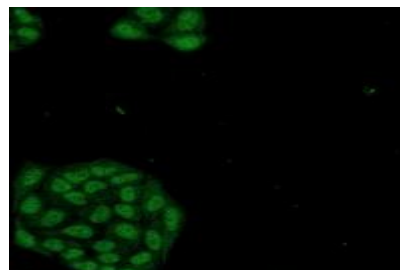
Specificity:

Recognizes endogenous levels of NR1D1 protein.

DATA:



Western blot analysis of NR1D1 expression in K562 (A), C6 (B), NIH3T3 (C), HeLa (D) whole cell lysates.



Immunofluorescent analysis of NR1D1 staining in HeLa cells. Formalin-fixed cells were permeabilized with 0.1% Triton X-100 in TBS for 5-10 minutes and blocked with 3% BSA-PBS for 30 minutes at room temperature. Cells were probed with the primary antibody in 3% BSA-PBS and incubated overnight at 4 °C in a humidified chamber. Cells were washed with PBST and incubated with a AF488-conjugated secondary antibody (green) in PBS at room temperature in the dark.

Note:

For research use only, not for use in diagnostic procedure.

Bioworld Technology, Inc.

Add: 1660 South Highway 100, Suite 500 St. Louis Park, MN 55416, USA.

Email: info@bioworld.com

Tel: 6123263284

Fax: 6122933841

Bioworld technology, co. Ltd.

Add: No 9, weidi road Qixia District Nanjing, 210046, P. R. China.

Email: info@biogot.com

Tel: 0086-025-68037686

Fax: 0086-025-68035151



PRODUCT DATA SHEET

Bioworld Technology, Inc.

Bioworld Technology, Inc.

Add: 1660 South Highway 100, Suite 500 St. Louis Park,
MN 55416, USA.

Email: info@bioworld.com

Tel: 6123263284

Fax: 6122933841

Bioworld technology, co. Ltd.

Add: No 9, weidi road Qixia District Nanjing, 210046,
P. R. China.

Email: info@biogot.com

Tel: 0086-025-68037686

Fax: 0086-025-68035151