

NEK7 Rabbit monoclonal antibody

Catalog: MB66368

Host: Rabbit

Reactivity: Mouse, Rat

BackGround:

NIMA was originally shown in *Aspergillus nidulans* to be necessary for entry into mitosis. NIMA-related mammalian proteins have since been identified as Nek1-4 and Nek6-9. High expression of Nek1 is seen in male and female germ cell lines of mice. Nek2 is the closest known mammalian relative to NIMA. Like NIMA, Nek2 expression peaks at the G2 to M phase transition. Nek3, Nek6, Nek7 and Nek9 also regulate mitosis. Nek1 and Nek8 have been linked with polycystic kidney disease, and Nek4 expression is present in most primary carcinomas. Nek7 localizes to the cytoplasm and is highly expressed in lung, testis, muscle, spleen, heart, liver, leukocyte and brain. Lower expression of Nek7 is detected in the ovary, prostate and kidney, while no expression is seen in small intestine.

Product:

Liquid in 50mM Tris-Glycine (pH 7.4), 0.15M NaCl, 50% Glycerol, 0.01% Sodium azide and 0.05% BSA.

Molecular Weight:

~ 35 kDa

Swiss-Prot:

Q9ES74/D3ZBE5

Purification&Purity:

The antibody was purified by immunogen affinity chromatography.

Applications:

WB (1/500 - 1/1000), IP (1/10 - 1/50)

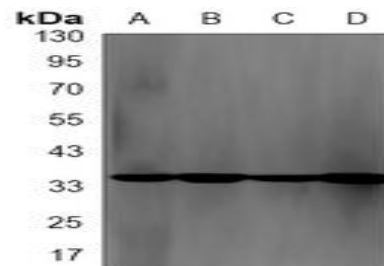
Storage&Stability:

Store at 4 °C short term. Aliquot and store at -20 °C long term. Avoid freeze-thaw cycles.

Specificity:

Recognizes endogenous levels of NEK7 protein.

DATA:



Western blot analysis of NEK7 expression in NIH3T3 (A), Raw264.7 (B), rat brain (C), C6 (D) whole cell lysates.

Note:

For research use only, not for use in diagnostic procedure.

Bioworld Technology, Inc.

Add: 1660 South Highway 100, Suite 500 St. Louis Park, MN 55416, USA.

Email: info@bioworld.com

Tel: 6123263284

Fax: 6122933841

Bioworld technology, co. Ltd.

Add: No 9, weidi road Qixia District Nanjing, 210046, P. R. China.

Email: info@biogot.com

Tel: 0086-025-68037686

Fax: 0086-025-68035151