

ABCE1 Rabbit monoclonal antibody

Catalog: MB66263

Host: Rabbit

Reactivity: Human, Mouse, Rat

BackGround:

ABCE1 (RNS4I, RLI) is a mediator of the 2-5A/RNase L pathway. The 2-5A/RNase L system is considered an essential pathway of interferon (IFN) action. In the pathway, IFN stimulation activates 2-5A synthetases which convert ATP into a set of atypical oligomers known as 2-5A. These oligomers in turn activate RNase L (RNS4), which leads to inhibition of protein synthesis by cleaving mRNAs at the 3-prime side of UpNp sequences. This inhibition necessitates the association of ABCE1 with RNase L and is dependent on the ratio between the two proteins. The 2-5A/RNase L system could also play a more general physiological role, for instance, in the regulation of RNA stability in mammalian cells.

Product:

Liquid in 50mM Tris-Glycine (pH 7.4), 0.15M NaCl, 50% Glycerol, 0.01% Sodium azide and 0.05% BSA.

Molecular Weight:

~ 68 kDa

Swiss-Prot:

P61221

Purification&Purity:

The antibody was purified by immunogen affinity chro-

matography.

Applications:

WB (1/500 - 1/1000), IP (1/10 - 1/50)

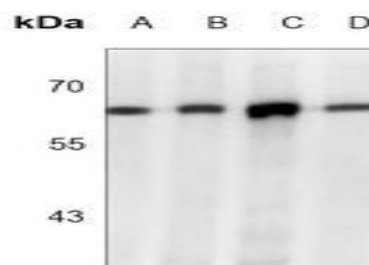
Storage&Stability:

Store at 4 °C short term. Aliquot and store at -20 °C long term. Avoid freeze-thaw cycles.

Specificity:

Recognizes endogenous levels of ABCE1 protein.

DATA:



Western blot analysis of ABCE1 expression in K562 (A), C6 (B), NIH3T3 (C), HeLa (D) whole cell lysates.

Note:

For research use only, not for use in diagnostic procedure.

Bioworld Technology, Inc.

Add: 1660 South Highway 100, Suite 500 St. Louis Park, MN 55416, USA.

Email: info@bioworld.com

Tel: 6123263284

Fax: 6122933841

Bioworld technology, co. Ltd.

Add: No 9, weidi road Qixia District Nanjing, 210046, P. R. China.

Email: info@biogot.com

Tel: 0086-025-68037686

Fax: 0086-025-68035151