

## AT1 Rabbit monoclonal antibody

Catalog: MB66258

Host: Rabbit

Reactivity: Human

### BackGround:

Receptor for angiotensin II, a vasoconstricting peptide, which acts as a key regulator of blood pressure and sodium retention by the kidney.

The activated receptor in turn couples to G-alpha proteins G(q) (GNAQ, GNA11, GNA14 or GNA15) and thus activates phospholipase C and increases the cytosolic Ca<sup>2+</sup> concentrations, which in turn triggers cellular responses such as stimulation of protein kinase C.

(Microbial infection) During SARS coronavirus-2/SARS-CoV-2 infection, it is able to recognize and internalize the complex formed by secreted ACE2 and SARS-CoV-2 spike protein through DNM2/dynamin 2-dependent endocytosis.

### Product:

Liquid in 50mM Tris-Glycine (pH 7.4), 0.15M NaCl, 50% Glycerol, 0.01% Sodium azide and 0.05% BSA.

### Molecular Weight:

~ 41 kDa

### Swiss-Prot:

P30556

### Purification&Purity:

The antibody was purified by immunogen affinity chromatography.

### Applications:

WB (1/500 - 1/1000)

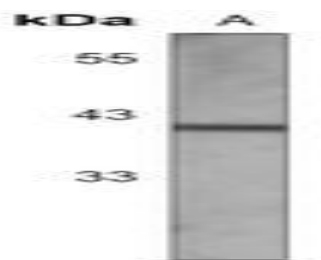
### Storage&Stability:

Store at 4 °C short term. Aliquot and store at -20 °C long term. Avoid freeze-thaw cycles.

### Specificity:

Recognizes endogenous levels of AT1 protein.

### DATA:



Western blot analysis of AT1 expression in HepG2 (A) whole cell lysates.

### Note:

For research use only, not for use in diagnostic procedure.

### Bioworld Technology, Inc.

Add: 1660 South Highway 100, Suite 500 St. Louis Park, MN 55416, USA.

Email: [info@bioworld.com](mailto:info@bioworld.com)

Tel: 6123263284

Fax: 6122933841

### Bioworld technology, co. Ltd.

Add: No 9, weidi road Qixia District Nanjing, 210046, P. R. China.

Email: [info@biogot.com](mailto:info@biogot.com)

Tel: 0086-025-68037686

Fax: 0086-025-68035151