

Mesothelin monoclonal antibody

Catalog: MB66236

Host: Mouse

Reactivity: Human

BackGround:

The MSLN gene encodes a 69 kDa precursor protein that is proteolytically cleaved to yield Megakaryocyte Potentiating Factor (MPF) and a GPI-anchored membrane protein termed mesothelin. Expression of (cleaved) mesothelin is largely confined to mesothelial cells of normal pleura, pericardium, and peritoneum, but has been reported to be overexpressed in some cancers, including mesothelioma, and some pancreatic and ovarian adenocarcinomas (1,2). Although suggested to be involved in cell adhesion, the physiological functions of mesothelin have not been determined. It is known, however, that mesothelin can be shed from the cell surface following cleavage by TNF- α converting enzyme. Research studies show that serum levels of mesothelin are markedly increased in patients with mesothelioma and ovarian cancer, suggesting that serum mesothelin levels may have utility as a cancer biomarker (1-3).

Product:

Mouse IgG. Liquid in PBS containing 50% glycerol, 0.2% BSA and 0.01% sodium azide.

Molecular Weight:

~ 68 kDa

Swiss-Prot:

Q13421

Purification&Purity:

The antibody was affinity-purified from mouse antiserum by affinity-chromatography using epitope-specific immunogen and the purity is > 95% (by SDS-PAGE).

Applications:

IHC (1/100 - 1/300)

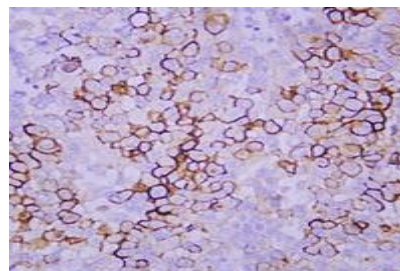
Storage&Stability:

Store at 4 °C short term. Aliquot and store at -20 °C long term. Avoid freeze-thaw cycles.

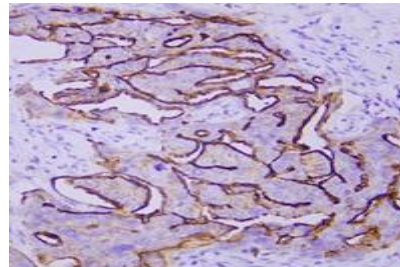
Specificity:

Recognizes endogenous levels of Mesothelin protein.

DATA:



Immunohistochemical analysis of Mesothelin staining in human mesothelioma formalin fixed paraffin embedded tissue section. The section was pre-treated using heat mediated antigen retrieval with sodium citrate buffer (pH 6.0). The section was then incubated with the antibody at room temperature and detected using an HRP conjugated compact polymer system. DAB was used as the chromogen. The section was then counterstained with haematoxylin and mounted with DPX.



Immunohistochemical analysis of Mesothelin staining in human ovarian serous carcinoma formalin fixed paraffin embedded tissue section. The section was pre-treated using heat mediated antigen retrieval with sodium citrate buffer (pH 6.0). The section was then incubated with the antibody at room temperature and detected using an HRP conjugated compact polymer system. DAB was used as the chromogen. The section was then counterstained with haematoxylin and mounted with DPX.

Note:

For research use only, not for use in diagnostic procedure.

Bioworld Technology, Inc.

Add: 1660 South Highway 100, Suite 500 St. Louis Park, MN 55416, USA.

Email: info@bioworld.com

Tel: 6123263284

Fax: 6122933841

Bioworld technology, co. Ltd.

Add: No 9, weidi road Qixia District Nanjing, 210046, P. R. China.

Email: info@biogot.com

Tel: 0086-025-68037686

Fax: 0086-025-68035151



PRODUCT DATA SHEET

Bioworld Technology, Inc.

Bioworld Technology, Inc.

Add: 1660 South Highway 100, Suite 500 St. Louis Park,
MN 55416, USA.

Email: info@bioworld.com

Tel: 6123263284

Fax: 6122933841

Bioworld technology, co. Ltd.

Add: No 9, weidi road Qixia District Nanjing, 210046,
P. R. China.

Email: info@biogot.com

Tel: 0086-025-68037686

Fax: 0086-025-68035151