

## AMACR monoclonal antibody

Catalog: MB66173

Host: Mouse

Reactivity: Human

**BackGround:**

$\alpha$ -methylacyl-CoA racemase (AMACR), an enzyme localized in peroxisomes and mitochondria, is involved in the  $\beta$ -oxidation of branched-chain fatty acids and fatty acid derivatives. AMACR has been reported to be a biomarker for prostate cancer. The expression of AMACR is also related to other types of cancers such as hepatocellular carcinoma, noninvasive bladder cancer, colorectal cancer and gastric adenocarcinoma.

**Product:**

Mouse IgG1. Liquid in PBS containing 50% glycerol, 0.2% BSA and 0.01% sodium azide.

**Molecular Weight:**

~ 43 kDa

**Swiss-Prot:**

Q9UHK6

**Purification&Purity:**

The antibody was affinity-purified from mouse antiserum by affinity-chromatography using epitope-specific immunogen and the purity is > 95% (by SDS-PAGE).

**Applications:**

WB (1/500 - 1/1000), IHC (1/100 - 1/300)

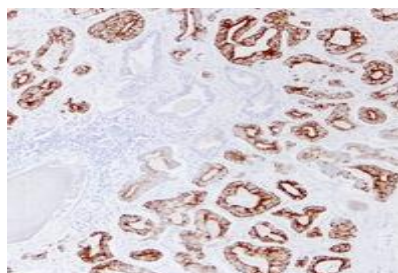
**Storage&Stability:**

Store at 4 °C short term. Aliquot and store at -20 °C long

term. Avoid freeze-thaw cycles.

**Specificity:**

Recognizes endogenous levels of AMACR protein.

**DATA:**

Immunohistochemical analysis of AMACR staining in human prostatic carcinoma formalin fixed paraffin embedded tissue section. The section was pre-treated using heat mediated antigen retrieval with sodium citrate buffer (pH 6.0). The section was then incubated with the antibody at room temperature and detected using an HRP conjugated compact polymer system. DAB was used as the chromogen. The section was then counterstained with haematoxylin and mounted with DPX.

**Note:**

For research use only, not for use in diagnostic procedure.

**Bioworld Technology, Inc.**

Add: 1660 South Highway 100, Suite 500 St. Louis Park, MN 55416, USA.

Email: [info@bioworld.com](mailto:info@bioworld.com)

Tel: 6123263284

Fax: 6122933841

**Bioworld technology, co. Ltd.**

Add: No 9, weidi road Qixia District Nanjing, 210046, P. R. China.

Email: [info@biogol.com](mailto:info@biogol.com)

Tel: 0086-025-68037686

Fax: 0086-025-68035151