

PTH monoclonal antibody

Catalog: MB66123

Host: Mouse

Reactivity: Human

BackGround:

Parathyroid related protein (PTHrP), is a polypeptide hormone produced by almost every tissue of the body and is closely related to parathyroid hormone (PTH). It signals through its receptor, PTHR1, regulating endochondral bone development and epithelial-mesenchymal interactions during the formation of the mammary glands and teeth. The receptor for this hormone (PTHRP) is responsible for most cases of humoral hypercalcemia of malignancy.

Product:

Mouse IgG1. Liquid in PBS containing 50% glycerol, 0.2% BSA and 0.01% sodium azide.

Molecular Weight:

~ 12 kDa

Swiss-Prot:

P01270

Purification&Purity:

The antibody was affinity-purified from mouse antiserum by affinity-chromatography using epitope-specific immunogen and the purity is > 95% (by SDS-PAGE).

Applications:

IHC (1/100 - 1/300)

Storage&Stability:

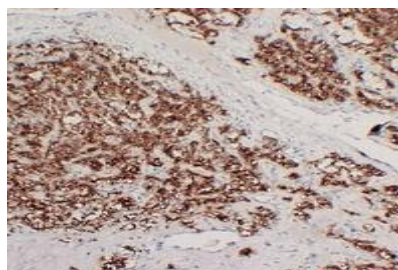
Store at 4 °C short term. Aliquot and store at -20 °C long

term. Avoid freeze-thaw cycles.

Specificity:

Recognizes endogenous levels of PTH protein.

DATA:



Immunohistochemical analysis of PTH staining in human parathyroid-oma formalin fixed paraffin embedded tissue section. The section was pre-treated using heat mediated antigen retrieval with sodium citrate buffer (pH 6.0). The section was then incubated with the antibody at room temperature and detected using an HRP conjugated compact polymer system. DAB was used as the chromogen. The section was then counterstained with haematoxylin and mounted with DPX.

Note:

For research use only, not for use in diagnostic procedure.

Bioworld Technology, Inc.

Add: 1660 South Highway 100, Suite 500 St. Louis Park, MN 55416, USA.

Email: info@bioworld.com

Tel: 6123263284

Fax: 6122933841

Bioworld technology, co. Ltd.

Add: No 9, weidi road Qixia District Nanjing, 210046, P. R. China.

Email: info@biogot.com

Tel: 0086-025-68037686

Fax: 0086-025-68035151