

CD1a monoclonal antibody

Catalog: MB66042

Host: Mouse

Reactivity: Human

BackGround:

CD1A is a type 1 cell surface transmembrane glycoprotein structurally similar to MHC Class 1 that is expressed in association with β 2-microglobulin. CD1A is a member of the CD1 family and has been shown to mediate the presentation of primary lipid and glycolipid antigens to T cell lymphocytes for recognition. It is expressed by Langerhans' cells, cortical double positive and single positive thymocytes, and by interdigitating dendritic cells. CD1A has been shown to identify T cell development.

Product:

Mouse IgG2b. Liquid in PBS containing 50% glycerol, 0.2% BSA and 0.01% sodium azide.

Molecular Weight:

~ 37 kDa

Swiss-Prot:

P06126

Purification&Purity:

The antibody was affinity-purified from mouse antiserum by affinity-chromatography using epitope-specific immunogen and the purity is > 95% (by SDS-PAGE).

Applications:

IHC (1/100 - 1/300)

Storage&Stability:

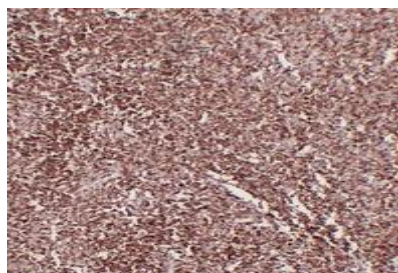
Store at 4 °C short term. Aliquot and store at -20 °C long

term. Avoid freeze-thaw cycles.

Specificity:

Recognizes endogenous levels of CD1a protein.

DATA:



Immunohistochemical analysis of CD1a staining in human thymoma formalin fixed paraffin embedded tissue section. The section was pre-treated using heat mediated antigen retrieval with sodium citrate buffer (pH 6.0). The section was then incubated with the antibody at room temperature and detected using an HRP conjugated compact polymer system. DAB was used as the chromogen. The section was then counterstained with haematoxylin and mounted with DPX.

Note:

For research use only, not for use in diagnostic procedure.

Bioworld Technology, Inc.

Add: 1660 South Highway 100, Suite 500 St. Louis Park, MN 55416, USA.

Email: info@bioworld.com

Tel: 6123263284

Fax: 6122933841

Bioworld technology, co. Ltd.

Add: No 9, weidi road Qixia District Nanjing, 210046, P. R. China.

Email: info@biogot.com

Tel: 0086-025-68037686

Fax: 0086-025-68035151