

## Prolactin monoclonal antibody

Catalog: MB66016

Host: Mouse

Reactivity: Human

### BackGround:

The anterior pituitary secretes a variety of hormones that are involved in cell growth, differentiation and development. Prolactin, a 226 amino acid protein, plays a role in multiple processes, including cell growth, reproduction and immune function. Full length Prolactin, as well as an alternative splice product lacking the third exon, are secreted by endothelial cells involved in angiogenesis. In addition to its role in mammary development and lactation, Prolactin is known to play a role in the development of mammary cancer, acting as both a mitogen and a differentiating agent. Prolactin has also been shown to enhance the proliferation of B cell hybridomas, leading to an overall increase in antibody production. In addition, Prolactin has been demonstrated to reverse the antiproliferative effects of the immunosuppressive cytokine TGF- $\beta$ . Prolactin is also associated with a variety of autoimmune diseases, including arthritis and type 1 diabetes.

### Product:

Mouse IgG1. Liquid in PBS containing 50% glycerol, 0.2% BSA and 0.01% sodium azide.

### Molecular Weight:

~ 25 kDa

### Swiss-Prot:

P01236

### Purification&Purity:

The antibody was affinity-purified from mouse antiserum by affinity-chromatography using epitope-specific immunogen and the purity is > 95% (by SDS-PAGE).

### Applications:

IHC (1/100 - 1/300)

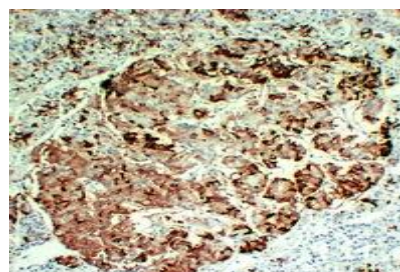
### Storage&Stability:

Store at 4 °C short term. Aliquot and store at -20 °C long term. Avoid freeze-thaw cycles.

### Specificity:

Recognizes endogenous levels of Prolactin protein.

### DATA:



Immunohistochemical analysis of Prolactin staining in human hyperprolactinemia formalin fixed paraffin embedded tissue section. The section was pre-treated using heat mediated antigen retrieval with sodium citrate buffer (pH 6.0). The section was then incubated with the antibody at room temperature and detected using an HRP conjugated compact polymer system. DAB was used as the chromogen. The section was then counterstained with haematoxylin and mounted with DPX.

### Note:

For research use only, not for use in diagnostic procedure.

### Bioworld Technology, Inc.

Add: 1660 South Highway 100, Suite 500 St. Louis Park, MN 55416, USA.

Email: [info@bioworld.com](mailto:info@bioworld.com)

Tel: 6123263284

Fax: 6122933841

### Bioworld technology, co. Ltd.

Add: No 9, weidi road Qixia District Nanjing, 210046, P. R. China.

Email: [info@biogot.com](mailto:info@biogot.com)

Tel: 0086-025-68037686

Fax: 0086-025-68035151