

## IDE monoclonal antibody

Catalog: MB65959

Host: Mouse

Reactivity: Human

### BackGround:

Insulin degrading enzyme (IDE), initiates the cleavage of Insulin, resulting in Insulin response and resistance. However, IDE also degrades a variety of bioactive peptides, including Amyloid- $\beta$  peptides, implicating IDE in certain age-related changes seen in Alzheimer's disease. Studies show that when the expression of the IDE gene (chromosome 10q23.33) is altered, changes occur not only in glucose homeostasis, but also in the levels of brain A $\beta$ 40 and A $\beta$ 42 peptides. An IDE inhibitor, bacitracin, inhibits degradation of both Insulin and amylin, indicating that both are degraded through a common proteolytic pathway. Variations in the rate of proteolysis suggest that the function of IDE exhibits conformational dependence, which may lead to possible therapeutic interventions for diabetes, AD, and other diseases associated with IDE substrate proteolysis.

### Product:

Liquid in 0.42% Potassium phosphate, 0.87% Sodium chloride, pH 7.3, 30% glycerol, and 0.01% sodium azide.

### Molecular Weight:

~ 118 kDa

### Swiss-Prot:

P14735

### Purification&Purity:

The antibody was affinity-purified from mouse antiserum by affinity-chromatography using epitope-specific immunogen and the purity is > 95% (by SDS-PAGE).

### Applications:

WB (1/1000 - 1/2000)

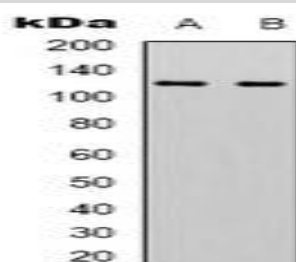
### Storage&Stability:

Store at 4 °C short term. Aliquot and store at -20 °C long term. Avoid freeze-thaw cycles.

### Specificity:

Recognizes endogenous levels of IDE protein.

### DATA:



Western blot analysis of IDE expression in Hela (A), HepG2 (B) whole cell lysates.

### Note:

For research use only, not for use in diagnostic procedure.

### Bioworld Technology, Inc.

Add: 1660 South Highway 100, Suite 500 St. Louis Park, MN 55416, USA.

Email: [info@bioworld.com](mailto:info@bioworld.com)

Tel: 6123263284

Fax: 6122933841

### Bioworld technology, co. Ltd.

Add: No 9, weidi road Qixia District Nanjing, 210046, P. R. China.

Email: [info@biogol.com](mailto:info@biogol.com)

Tel: 0086-025-68037686

Fax: 0086-025-68035151