

Galectin 3 monoclonal antibody

Catalog: MB65926

Host: Mouse

Reactivity: Human, Mouse

BackGround:

Galectins are a family of β -galactose binding proteins that are characterized by an affinity for poly-N-acetyllactosamine-enriched glycoconjugates and a carbohydrate-binding site. Members of the galectin family have been implicated in a variety of biological functions including cell adhesion, growth regulation, cytokine production, T-cell apoptosis, and immune responses. Galectin-3/LGALS3 is involved in several diverse biological functions. Galectin-3/LGALS3 binds IgE. Galectin-3/LGALS3 is an unusual protein in that it can be found both extracellularly and intracellularly. Intracellularly, galectin-3/LGALS3 can localize to the cytoplasm, nucleus, or both, depending on cell type and experimental conditions. Nuclear galectin-3/LGALS3 has been identified as a pre-mRNA splicing factor. Galectin-3/LGALS3 production has been shown to increase during inflammation and in obesity, and the protein itself can have an inflammatory effect under certain conditions. Galectin-3/LGALS3 forms a complex with $\alpha 3$, $\beta 1$ integrin to act as a surface receptor on endothelial cells for the NG2 proteoglycan, which triggers cell motility and angiogenesis. In addition to these functions, galectin-3/LGALS3 is also a required factor for the terminal differentiation of epithelial cells.

Product:

Liquid in 0.42% Potassium phosphate, 0.87% Sodium chloride, pH 7.3, 30% glycerol, and 0.01% sodium azide.

Molecular Weight:

~ 26 kDa

Swiss-Prot:

P17931

Purification&Purity:

The antibody was affinity-purified from mouse antiserum by affinity-chromatography using epitope-specific immunogen and the purity is > 95% (by SDS-PAGE).

Applications:

WB (1/2000 - 1/5000)

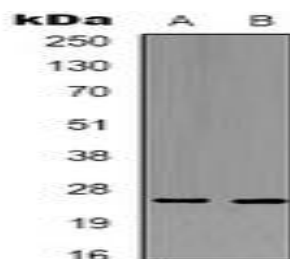
Storage&Stability:

Store at 4 °C short term. Aliquot and store at -20 °C long term. Avoid freeze-thaw cycles.

Specificity:

Recognizes endogenous levels of Galectin 3 protein.

DATA:



Western blot analysis of Galectin 3 expression in MCF7 (A), NIH3T3 (B) whole cell lysates.

Note:

For research use only, not for use in diagnostic procedure.

Bioworld Technology, Inc.

Add: 1660 South Highway 100, Suite 500 St. Louis Park, MN 55416, USA.

Email: info@bioworld.com

Tel: 6123263284

Fax: 6122933841

Bioworld technology, co. Ltd.

Add: No 9, weidi road Qixia District Nanjing, 210046, P. R. China.

Email: info@biogot.com

Tel: 0086-025-68037686

Fax: 0086-025-68035151