

CD31 monoclonal antibody

Catalog: MB65771

Host: Mouse

Reactivity: Human

BackGround:

CD31 (Platelet Endothelial Cell Adhesion Molecule-1: PECAM-1), a member of the Ig superfamily of cell adhesion molecules, is expressed by circulating platelets, monocytes, neutrophils, some T cells, and endothelial cells and modulates cell adhesion, endothelial cell migration, and angiogenesis. CD31 is phosphorylated on Tyr686 at the cytoplasmic carboxy-terminal tail upon various stimuli (e.g. mechanical or oxidative stress), presumably by Src family members. The tyrosine phosphorylation mediates associations with a number of SH2 domain-containing binding partners such as PI3 kinase, SHIP, PLC γ , and SHP-2. Thus, CD31 serves as a scaffold for various signaling molecules.

Product:

Mouse IgG1. Liquid in PBS, pH 7.3, and 0.02% sodium azide.

Molecular Weight:

~ 82 kDa

Swiss-Prot:

P16284

Purification&Purity:

The monoclonal antibody was affinity-purified from mouse antiserum by affinity-chromatography using

epitope-specific immunogen and the purity is > 95% (by SDS-PAGE).

Applications:

IF (1/50 - 1/200)

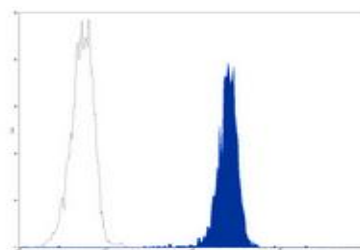
Storage&Stability:

Store at 4 °C short term. Aliquot and store at -20 °C long term. Avoid freeze-thaw cycles.

Specificity:

Recognizes human CD31

DATA:



Flow cytometric analysis of human peripheral blood platelets using Anti-CD31 Antibody, followed by anti-mouse IgG PE.

Note:

For research use only, not for use in diagnostic procedure.

Bioworld Technology, Inc.

Add: 1660 South Highway 100, Suite 500 St. Louis Park, MN 55416, USA.

Email: info@bioworld.com

Tel: 6123263284

Fax: 6122933841

Bioworld technology, co. Ltd.

Add: No 9, weidi road Qixia District Nanjing, 210046, P. R. China.

Email: info@biogot.com

Tel: 0086-025-68037686

Fax: 0086-025-68035151