



## CD23 monoclonal antibody

Catalog: MB65766

Host: Mouse

Reactivity: Human

**BackGround:**

Low-affinity receptor for immunoglobulin E (IgE) and CR2/CD21. Has essential roles in the regulation of IgE production and in the differentiation of B-cells (it is a B-cell-specific antigen).

**Product:**

Mouse IgG1 kappa. Liquid in PBS, pH 7.3, and 0.02% sodium azide.

**Molecular Weight:**

~ 36 kDa

**Swiss-Prot:**

P06734

**Purification&Purity:**

The monoclonal antibody was affinity-purified from mouse antiserum by affinity-chromatography using epitope-specific immunogen and the purity is > 95% (by SDS-PAGE).

**Applications:**

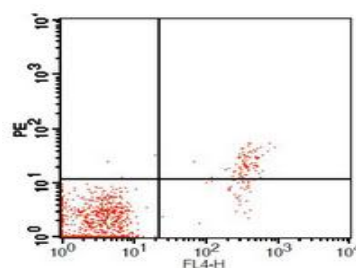
IF (1/50 - 1/200)

**Storage&Stability:**

Store at 4 °C short term. Aliquot and store at -20 °C long term. Avoid freeze-thaw cycles.

**Specificity:**

Recognizes human CD23

**DATA:**

Flow cytometric analysis of human peripheral blood lymphocytes using Anti-CD23 Antibody, followed by anti-mouse IgG PE.

**Note:**

For research use only, not for use in diagnostic procedure.

**Bioworld Technology, Inc.**

Add: 1660 South Highway 100, Suite 500 St. Louis Park, MN 55416, USA.

Email: [info@bioworld.com](mailto:info@bioworld.com)

Tel: 6123263284

Fax: 6122933841

**Bioworld technology, co. Ltd.**

Add: No 9, weidi road Qixia District Nanjing, 210046, P. R. China.

Email: [info@biogot.com](mailto:info@biogot.com)

Tel: 0086-025-68037686

Fax: 0086-025-68035151