

alpha Smooth Muscle Actin (3G2) monoclonal antibody

Catalog: MB3218

Host: Mouse

Reactivity: Human, Mouse, Rat

BackGround:

Involved in the interaction of plaque proteins and intermediate filaments mediating cell-cell adhesion. Defects in ACTA2 are the cause of aortic aneurysm familial thoracic type 6 (AAT6) [MIM:611788]. They are primarily associated with a characteristic histologic appearance known as 'medial necrosis' or 'Erdheim cystic medial necrosis' in which there is degeneration and fragmentation of elastic fibers, loss of smooth muscle cells, and an accumulation of basophilic ground substance.

Product:

Liquid in PBS containing 50% glycerol, 0.5% BSA and 0.02% sodium azide, pH 7.3.

Molecular Weight:

Calculated MW: 42 kDa; Observed MW: 42 kDa

Swiss-Prot:

P62736

Purification&Purity:

Affinity Purified

Applications:

WB: 1/500-1/1000 IHC: 1/50-1/100 IF: 1/50-1/200

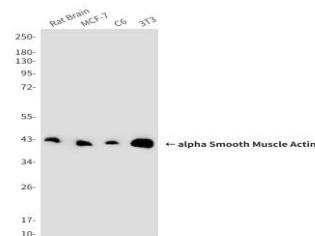
Storage&Stability:

Store at 4 °C short term. Aliquot and store at -20 °C long term. Avoid freeze-thaw cycles.

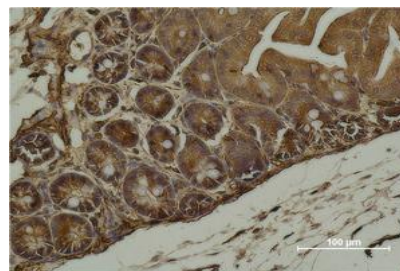
Isotype:

IgG1

DATA:



Immunohistochemistry analysis of paraffin-embedded mouse Cecal Tissue using alpha Smooth Muscle Actin antibody. High-pressure and temperature Sodium Citrate pH 6.0 was used for antigen retrieval.



Western blot analysis of alpha Smooth Muscle Actin in αSmooth Muscle Actin in rat Brain, MCF-7, C6 and 3T3 lysates using alpha Smooth Muscle Actin antibody

Western blot analysis of alpha Smooth Muscle Actin in Hela, A549, HL6, U2OS, C6 lysates using alpha Smooth Muscle Actin antibody

Note:

For research use only, not for use in diagnostic procedure.

Bioworld Technology, Inc.

Add: 1660 South Highway 100, Suite 500 St. Louis Park, MN 55416, USA.

Email: info@bioworld.com

Tel: 6123263284

Fax: 6122933841

Bioworld technology, co. Ltd.

Add: No 9, weidi road Qixia District Nanjing, 210046, P. R. China.

Email: info@biogot.com

Tel: 0086-025-68037686

Fax: 0086-025-68035151