

## IgG (5B2) monoclonal antibody

Catalog: MB3064

Host: Mouse

Reactivity: Rabbit

**BackGround:**

Constant region of immunoglobulin heavy chains. Immunoglobulins, also known as antibodies, are membrane-bound or secreted glycoproteins produced by B lymphocytes.

**Product:**

Liquid in PBS containing 50% glycerol, 0.5% BSA and 0.02% sodium azide, pH 7.3.

**Molecular Weight:**

Calculated MW: 55,25 kDa; Observed MW: 55,25 kDa

**Swiss-Prot:**

-

**Purification&Purity:**

Affinity Purified

**Applications:**

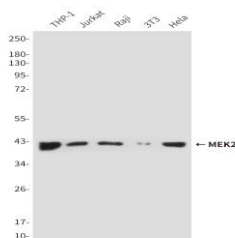
WB: 1/500-1/1000 ELISA: 1/10000

**Storage&Stability:**

Store at 4 °C short term. Aliquot and store at -20 °C long term. Avoid freeze-thaw cycles.

**Isotype:**

IgG1

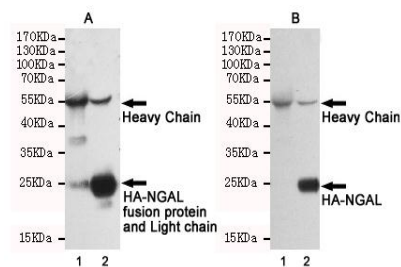
**DATA:**

Western blot analysis of MEK2 in THP-1, Jurkat, Raji, 3T3 and HeLa

lysates using MEK2 antibody, then incubated with 201069. Anti-mouse IgG, HRPlinked antibody was used for detecting.

Western blot analysis of Rabbit IgG in decreasing concentrations of total rabbit IgG reduced and denatured in 2X SDS loading buffer with DTT using IgG antibody.

Immunoprecipitation analysis of Rabbit IgG in CHO-K1 lysates transfected with HA-tagged NGAL using HA-tag antibody. Lane 1 contains rabbit IgG IP control lysates. All lanes are probed with HA-tag antibody as the primary antibody. Panel A incubated with secondary antibodies anti-rabbit whole IgG, HRPlinked antibody for detecting. Panel B incubated with anti-rabbit IgG mAb and the Anti-mouse whole IgG, HRPlinked antibody was used for detecting.

**Note:**

For research use only, not for use in diagnostic procedure.

**Bioworld Technology, Inc.**

Add: 1660 South Highway 100, Suite 500 St. Louis Park, MN 55416, USA.

Email: [info@bioworld.com](mailto:info@bioworld.com)

Tel: 6123263284

Fax: 6122933841

**Bioworld technology, co. Ltd.**

Add: No 9, weidi road Qixia District Nanjing, 210046, P. R. China.

Email: [info@biogot.com](mailto:info@biogot.com)

Tel: 0086-025-68037686

Fax: 0086-025-68035151