

XRCC1 (3F6) monoclonal antibody

Catalog: MB3057

Host: Mouse

Reactivity: Human

BackGround:

XRCC1 acts as a scaffold protein to coordinate DNA abasic site repair through interaction with several other repair proteins. At least eight XRCC1 protein partners have been identified, including the polynucleotide kinase PNK, DNA ligase III, poly (ADP-ribose) polymerase, and PCNA.

Product:

Liquid in PBS containing 50% glycerol, 0.5% BSA and 0.02% sodium azide, pH 7.3.

Molecular Weight:

Calculated MW: 69 kDa; Observed MW: 82 kDa

Swiss-Prot:

P18887

Purification&Purity:

Affinity Purified

Applications:

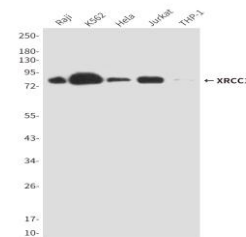
WB: 1/500-1/1000

Storage&Stability:

Store at 4 °C short term. Aliquot and store at -20 °C long term. Avoid freeze-thaw cycles.

Isotype:

IgG1

DATA:

Western blot analysis of XRCC1 in Raji, K562, HeLa, Jurkat and THP-1 lysates using XRCC1 antibody.

Note:

For research use only, not for use in diagnostic procedure.

Bioworld Technology, Inc.

Add: 1660 South Highway 100, Suite 500 St. Louis Park,
MN 55416, USA.

Email: info@bioworld.com

Tel: 6123263284

Fax: 6122933841

Bioworld technology, co. Ltd.

Add: No 9, weidi road Qixia District Nanjing, 210046,
P. R. China.

Email: info@biogot.com

Tel: 0086-025-68037686

Fax: 0086-025-68035151