

**STAT1 (6C2) monoclonal antibody**

Catalog: MB3049

Host: Mouse

Reactivity: Human, Monkey

**BackGround:**

The protein encoded by this gene is a member of the STAT protein family. In response to cytokines and growth factors, STAT family members are phosphorylated by the receptor associated kinases, and then form homo- or heterodimers that translocate to the cell nucleus where they act as transcription activators.

**Product:**

Liquid in PBS containing 50% glycerol, 0.5% BSA and 0.02% sodium azide, pH 7.3.

**Molecular Weight:**

Calculated MW: 87 kDa; Observed MW: 91 kDa

**Swiss-Prot:**

P42224

**Purification&Purity:**

Affinity Purified

**Applications:**

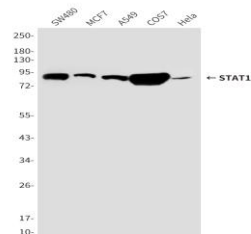
WB: 1/500-1/1000 IP: 1/20

**Storage&Stability:**

Store at 4 °C short term. Aliquot and store at -20 °C long term. Avoid freeze-thaw cycles.

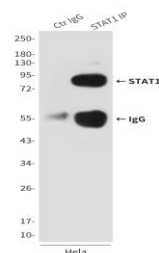
**Isotype:**

IgG2a

**DATA:**

Western blot analysis of STAT1 in HeLa, MCF-7, COS7, SW480 and A549 lysates using STAT1 antibody.

Immunoprecipitation analysis of STAT1 in HeLa lysates using STAT1 antibody.

**Note:**

For research use only, not for use in diagnostic procedure.

**Bioworld Technology, Inc.**

Add: 1660 South Highway 100, Suite 500 St. Louis Park, MN 55416, USA.

Email: [info@bioworld.com](mailto:info@bioworld.com)

Tel: 6123263284

Fax: 6122933841

**Bioworld technology, co. Ltd.**

Add: No 9, weidi road Qixia District Nanjing, 210046, P. R. China.

Email: [info@biogot.com](mailto:info@biogot.com)

Tel: 0086-025-68037686

Fax: 0086-025-68035151