

PKM2 (1F2) monoclonal antibody

Catalog: MB3027

Host: Mouse

Reactivity: Human, Mouse, Monkey

BackGround:

Pyruvate kinase is a glycolytic enzyme that catalyses the conversion of phosphoenolpyruvate to pyruvate. PKM2 is shown to be essential for aerobic glycolysis in tumors, known as the Warburg effect.

Product:

Liquid in PBS containing 50% glycerol, 0.5% BSA and 0.02% sodium azide, pH 7.3.

Molecular Weight:

Calculated MW: 58 kDa; Observed MW: 58 kDa

Swiss-Prot:

P14618

Purification&Purity:

Affinity Purified

Applications:

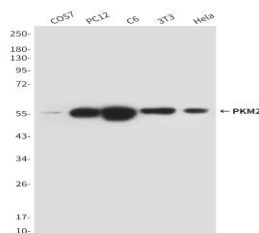
WB: 1/500-1/1000 IF: 1/50-1/200 IP: 1/20

Storage&Stability:

Store at 4 °C short term. Aliquot and store at -20 °C long term. Avoid freeze-thaw cycles.

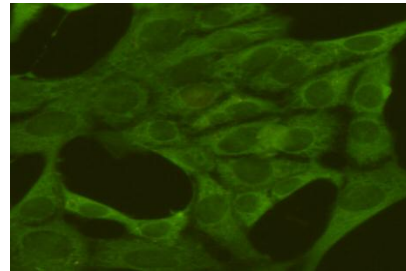
Isotype:

IgG2b

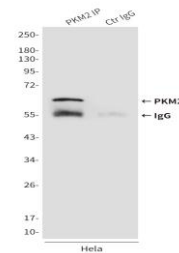
DATA:

Western blot analysis of PKM2 in HCT116, COS7, K562, A549 and HeLa lysates using PKM2 antibody.

Immunofluorescence analysis of PKM2 in 3T3 using PKM2 antibody.



Immunoprecipitation analysis of PKM2 in HeLa lysates using PKM2 antibody.

**Note:**

For research use only, not for use in diagnostic procedure.

Bioworld Technology, Inc.

Add: 1660 South Highway 100, Suite 500 St. Louis Park, MN 55416, USA.

Email: info@bioworld.com

Tel: 6123263284

Fax: 6122933841

Bioworld technology, co. Ltd.

Add: No 9, weidi road Qixia District Nanjing, 210046, P. R. China.

Email: info@biogot.com

Tel: 0086-025-68037686

Fax: 0086-025-68035151