

## Human Serum Albumin (5G11) monoclonal antibody

Catalog: MB3011

Host: Mouse

Reactivity: Human

### BackGround:

Albumin is a soluble, monomeric protein which comprises about one-half of the blood serum protein. Albumin functions primarily as a carrier protein for steroids, fatty acids, and thyroid hormones and plays a role in stabilizing extracellular fluid volume.

### Product:

Liquid in PBS containing 50% glycerol, 0.5% BSA and 0.02% sodium azide, pH 7.3.

### Molecular Weight:

-

### Swiss-Prot:

P02768

### Purification&Purity:

Affinity Purified

### Applications:

ELISA: 1/10000

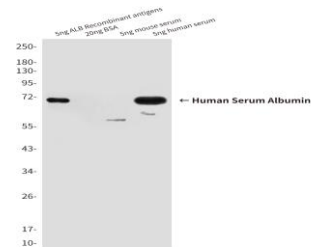
### Storage&Stability:

Store at 4 °C short term. Aliquot and store at -20 °C long term. Avoid freeze-thaw cycles.

### Isotype:

IgG1

### DATA:



Western blot analysis of Human Serum Albumin in 0.5nl Human serum and 5ng ALB Recombinant antigens lysates using Human Serum Albumin antibody.

Indirect ELISA assay for antiHuman Serum Albumin antibody. Antigen coating concentration: 8ug/ml.

Standard Curve for Human Serum Albumin ; using Capture antibody mouse monoclonal [1A8C5B4] to Human Serum Albumin at 8ug/ml and Detector antibody Rabbit polyclonal antiserum to Human Serum Albumin.

### Note:

For research use only, not for use in diagnostic procedure.

### Bioworld Technology, Inc.

Add: 1660 South Highway 100, Suite 500 St. Louis Park, MN 55416, USA.

Email: [info@bioworld.com](mailto:info@bioworld.com)

Tel: 6123263284

Fax: 6122933841

### Bioworld technology, co. Ltd.

Add: No 9, weidi road Qixia District Nanjing, 210046, P. R. China.

Email: [info@biogot.com](mailto:info@biogot.com)

Tel: 0086-025-68037686

Fax: 0086-025-68035151