

BRG1 (4E11) monoclonal antibody

Catalog: MB3008

Host: Mouse

Reactivity: Human

BackGround:

ATP-dependent chromatin remodeling complexes play an essential role in the regulation of various nuclear processes, such as gene expression, DNA replication, and repair. Acts as a corepressor of ZEB1 to regulate E-cadherin transcription and is required for induction of epithelial-mesenchymal transition (EMT) by ZEB1.

Product:

Liquid in PBS containing 50% glycerol, 0.5% BSA and 0.02% sodium azide, pH 7.3.

Molecular Weight:

Calculated MW: 185 kDa; Observed MW: 220 kDa

Swiss-Prot:

P51532

Purification&Purity:

Affinity Purified

Applications:

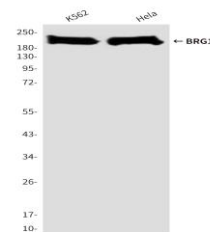
WB: 1/500-1/1000 IP: 1/20

Storage&Stability:

Store at 4 °C short term. Aliquot and store at -20 °C long term. Avoid freeze-thaw cycles.

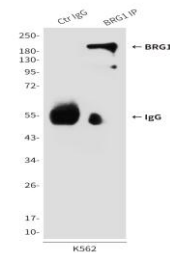
Isotype:

IgG1

DATA:

Western blot analysis of SBRG1 in HeLa NE and K562 lysates using BRG1 antibody.

Immunoprecipitation analysis of BRG1 in HeLa lysates. IP: BRG1 antibody; WB: BRG1 antibody.

**Note:**

For research use only, not for use in diagnostic procedure.

Bioworld Technology, Inc.

Add: 1660 South Highway 100, Suite 500 St. Louis Park, MN 55416, USA.

Email: info@bioworld.com

Tel: 6123263284

Fax: 6122933841

Bioworld technology, co. Ltd.

Add: No 9, weidi road Qixia District Nanjing, 210046, P. R. China.

Email: info@biogot.com

Tel: 0086-025-68037686

Fax: 0086-025-68035151