

## RFP-Tag Mouse monoclonal antibody

Catalog: MB2015

Host: Mouse

Reactivity: All

### BackGround:

Red Fluorescent Protein (RFP)-Tag fusion protein expression is commonly used in many laboratories for monitoring gene expression and protein localization in living cells. This antibody for RFP-Tag is a useful tool for detecting RFP-fusion protein expression.

### Product:

Mouse IgG1, 1mg/ml in PBS with 0.02% sodium azide, 50% glycerol, pH7.2

### Molecular Weight:

N/A

### Swiss-Prot:

N/A

### Purification&Purity:

Affinity-chromatography

### Applications:

WB: 1:5000~1:10000

IHC: 1:200

IF: 1:200

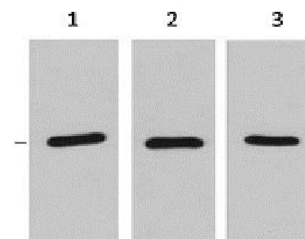
### Storage&Stability:

Store at 4 °C short term. Aliquot and store at -20 °C long term. Avoid freeze-thaw cycles.

### Specificity:

RFP-Tag mouse monoclonal antibody detects endogenous levels of internal, C-terminal, and N-terminal RFP recombinant proteins.

### DATA:



1ug RFP fusion protein+ Primary antibody dilution at  
1.1:3000  
2.1:5000  
3.1:10000

### Note:

For research use only, not for use in diagnostic procedure.

### Bioworld Technology, Inc.

Add: 1660 South Highway 100, Suite 500 St. Louis Park,  
MN 55416, USA.

Email: [info@bioworld.com](mailto:info@bioworld.com)

Tel: 6123263284

Fax: 6122933841

### Bioworld technology, co. Ltd.

Add: No 9, weidi road Qixia District Nanjing, 210046,  
P. R. China.

Email: [info@biogot.com](mailto:info@biogot.com)

Tel: 0086-025-68037686

Fax: 0086-025-68035151