

## mCherry-Tag Mouse monoclonal antibody

Catalog: MB2013

Host: Mouse

Reactivity: All

### BackGround:

MCherry is a fluorophore (a fluorescent molecule) used in biotechnology as a tracer to follow the flow of fluids, as a marker when tagged to molecules and cells components. mCherry is a monomeric fluorescent construct which absorbs at 587 nm and emits at 610 nm. It is resistant to photobleaching and is stable. It matures quickly, with a  $t_{0.5}$  of 15 minutes, allowing it to be visualised soon after translation.

### Product:

Mouse IgG1, 1mg/ml in PBS with 0.02% sodium azide, 50% glycerol, pH7.2

### Molecular Weight:

N/A

### Swiss-Prot:

N/A

### Purification&Purity:

Affinity-chromatography

### Applications:

WB: 1:5000~1:10000

IHC: 1:200

IF: 1:200

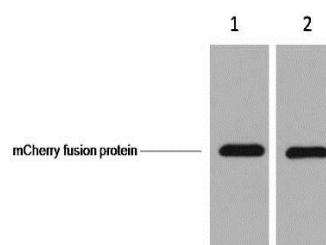
### Storage&Stability:

Store at 4 °C short term. Aliquot and store at -20 °C long term. Avoid freeze-thaw cycles.

### Specificity:

mCherry-Tag mouse monoclonal antibody detects endogenous levels of internal, C-terminal, and N-terminal mCherry -tagged recombinant proteins.

### DATA:



1 $\mu$ g mCherry fusion protein+ Primary antibody dilution at

1.1:5000

2.1:10000

### Note:

For research use only, not for use in diagnostic procedure.

### Bioworld Technology, Inc.

Add: 1660 South Highway 100, Suite 500 St. Louis Park, MN 55416, USA.

Email: [info@bioworld.com](mailto:info@bioworld.com)

Tel: 6123263284

Fax: 6122933841

### Bioworld technology, co. Ltd.

Add: No 9, weidi road Qixia District Nanjing, 210046, P. R. China.

Email: [info@biogot.com](mailto:info@biogot.com)

Tel: 0086-025-68037686

Fax: 0086-025-68035151