

## HSV-Tag Mouse monoclonal antibody

Catalog: MB2010

Host: Mouse

Reactivity: All

### BackGround:

HSV-Tag is an epitope tag composed of a 11 residue peptide (QPELAPEDPED) derived from the HSV glycoprotein D. This antibody can be used to check HSV- tagged fusion proteins. The recombinant protein over-expression systems with well-known epitope tags are powerful strategies in checking and purifying the interest proteins, which are expressed in certain vectors containing the particular tagged fragments. The small tags are used to be cloned along with the target proteins, and the antibodies against those fusion-tags are used to monitor fusion protein expression and purification.

### Product:

Mouse IgG1, 1mg/ml in PBS with 0.02% sodium azide, 50% glycerol, pH7.2

### Molecular Weight:

N/A

### Swiss-Prot:

N/A

### Purification&Purity:

Affinity-chromatography

### Applications:

WB: 1:5000~1:10000

IF: 1:200

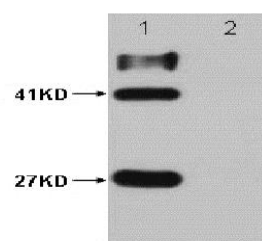
### Storage&Stability:

Store at 4 °C short term. Aliquot and store at -20 °C long term. Avoid freeze-thaw cycles.

### Specificity:

HSV-tag mouse monoclonal antibody detects endogenous levels of internal, C-terminal, and N-terminal HSV -tagged proteins.

### DATA:



HSV-Tag Mouse Monoclonal antibody Lane 1: GST- HSV fusion protein (27KD); MBP- HSV 2 fusion protein (41KD) Lane 2: GST protein; MBP protein

### Note:

For research use only, not for use in diagnostic procedure.

### Bioworld Technology, Inc.

Add: 1660 South Highway 100, Suite 500 St. Louis Park, MN 55416, USA.

Email: [info@bioworld.com](mailto:info@bioworld.com)

Tel: 6123263284

Fax: 6122933841

### Bioworld technology, co. Ltd.

Add: No 9, weidi road Qixia District Nanjing, 210046, P. R. China.

Email: [info@biogot.com](mailto:info@biogot.com)

Tel: 0086-025-68037686

Fax: 0086-025-68035151