

Ubiquitin Protein Ligase E3A monoclonal antibody

Catalog: MB12296

Host: Rabbit

Reactivity: Human, Mouse, Rat

BackGround:

E3 ubiquitin-protein ligase which accepts ubiquitin from an E2 ubiquitin-conjugating enzyme in the form of a thioester and transfers it to its substrates. Several substrates have been identified including the RAD23A and RAD23B, MCM7 (which is involved in DNA replication), annexin A1, the PML tumor suppressor, and the cell cycle regulator CDKN1B.

Product:

50mM Tris-Glycine(pH 7.4), 0.15M NaCl, 40% Glycerol, 0.01% Sodium azide and 0.05% BSA

Molecular Weight:

Calculated MW: 101 kDa; Observed MW: 101 kDa

Swiss-Prot:

Q05086

Purification&Purity:

Affinity Purified

Applications:

WB: 1/500-1/1000 IF: 1/50-1/200 IP: 1/20

Storage&Stability:

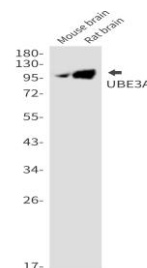
Store at 4 °C short term. Aliquot and store at -20 °C long

term. Avoid freeze-thaw cycles.

Isotype:

IgG

DATA:



Immunocytochemistry analysis of Ubiquitin Protein Ligase E3A in Hela using Ubiquitin Protein Ligase E3A antibody, and DAPI.

Western blot analysis of UBE3A in mouse brain, rat brain lysates using UBE3A antibody.

Western blot analysis of UBE3A in A549, HL-60, U2OS lysates using UBE3A antibody

Note:

For research use only, not for use in diagnostic procedure.

Bioworld Technology, Inc.

Add: 1660 South Highway 100, Suite 500 St. Louis Park, MN 55416, USA.

Email: info@bioworld.com

Tel: 6123263284

Fax: 6122933841

Bioworld technology, co. Ltd.

Add: No 9, weidi road Qixia District Nanjing, 210046, P. R. China.

Email: info@biogol.com

Tel: 0086-025-68037686

Fax: 0086-025-68035151