

## SNAP25 monoclonal antibody

Catalog: MB12252

Host: Rabbit

Reactivity: Human, Mouse, Rat

### BackGround:

SNAP25 forms a core complex with the SNARE proteins syntaxin and synaptobrevin to mediate synaptic vesicle fusion with the plasma membrane during  $Ca^{2+}$ -dependent exocytosis. This complex is responsible for exocytosis of the neurotransmitter  $\gamma$ -aminobutyric acid (GABA). Neurotransmitter release is inhibited by proteolysis of SNAP25 by botulinum toxins A and E. SNAP25 plays a secondary role as a Q-SNARE involved in endosome fusion; the protein is associated with genetic susceptibility to attention-deficit hyperactivity disorder (ADHD).

### Product:

50mM Tris-Glycine(pH 7.4), 0.15M NaCl, 40% Glycerol, 0.01% Sodium azide and 0.05% BSA

### Molecular Weight:

Calculated MW: 23 kDa; Observed MW: 23 kDa

### Swiss-Prot:

P60880

### Purification&Purity:

Affinity Purified

### Applications:

WB: 1/500-1/1000 IF: 1/50-1/200 IP: 1/20

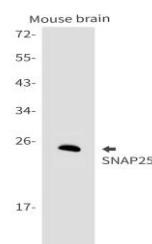
### Storage&Stability:

Store at 4 °C short term. Aliquot and store at -20 °C long term. Avoid freeze-thaw cycles.

### Isotype:

IgG

### DATA:



Immunocytochemistry analysis of SNAP25 in HeLa using SNAP25 antibody, and DAPI.

Western blot analysis of SNAP25 in mouse brain lysates using SNAP25 antibody.

Western blot analysis of SNAP25 in HL-60, C6 lysates using SNAP25 antibody

### Note:

For research use only, not for use in diagnostic procedure.

### Bioworld Technology, Inc.

Add: 1660 South Highway 100, Suite 500 St. Louis Park, MN 55416, USA.

Email: [info@bioworld.com](mailto:info@bioworld.com)

Tel: 6123263284

Fax: 6122933841

### Bioworld technology, co. Ltd.

Add: No 9, weidi road Qixia District Nanjing, 210046, P. R. China.

Email: [info@biogot.com](mailto:info@biogot.com)

Tel: 0086-025-68037686

Fax: 0086-025-68035151