

**RPS20 monoclonal antibody**

Catalog: MB12233

Host: Rabbit

Reactivity: Human, Mouse, Rat, Hamster

**BackGround:**

RPS20 is a ribosomal protein that is a component of the 40S subunit. Ribosomes, the organelles that catalyze protein synthesis, consist of a small 40S subunit and a large 60S subunit. Together these subunits are composed of 4 RNA species and approximately 80 structurally distinct proteins. RPS20 belongs to the S10P family of ribosomal proteins and is located in the cytoplasm.

**Product:**

50mM Tris-Glycine(pH 7.4), 0.15M NaCl, 40% Glycerol, 0.01% Sodium azide and 0.05% BSA

**Molecular Weight:**

Calculated MW: 13 kDa; Observed MW: 13 kDa

**Swiss-Prot:**

P60866

**Purification&Purity:**

Affinity Purified

**Applications:**

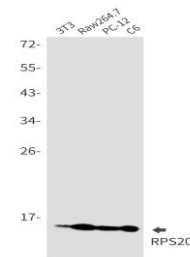
WB: 1/500-1/1000 IHC: 1/50-1/100

**Storage&Stability:**

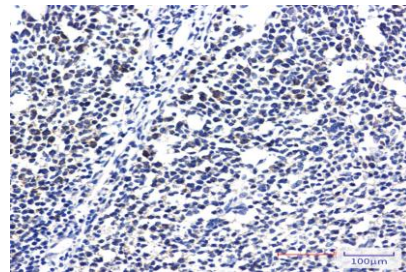
Store at 4 °C short term. Aliquot and store at -20 °C long term. Avoid freeze-thaw cycles.

**Isotype:**

IgG

**DATA:**

Western blot analysis of RPS20 in 3T3, Raw264.7, PC-12, C6 lysates using RPS20 antibody.



Western blot analysis of RPS20 in Hela, CHO-K1, C6, Ramos lysates using RPS20 antibody.

Immunohistochemistry analysis of paraffin-embedded Human tonsil using RPS20 antibody. High-pressure and temperature Sodium Citrate pH 6.0 was used for antigen retrieval.

**Note:**

For research use only, not for use in diagnostic procedure.

**Bioworld Technology, Inc.**

Add: 1660 South Highway 100, Suite 500 St. Louis Park, MN 55416, USA.

Email: [info@bioworld.com](mailto:info@bioworld.com)

Tel: 6123263284

Fax: 6122933841

**Bioworld technology, co. Ltd.**

Add: No 9, weidi road Qixia District Nanjing, 210046, P. R. China.

Email: [info@biogot.com](mailto:info@biogot.com)

Tel: 0086-025-68037686

Fax: 0086-025-68035151