

## CDC34 monoclonal antibody

Catalog: MB11960

Host: Rabbit

Reactivity: Human, Mouse, Rat

**BackGround:**

Involved in ubiquitin conjugation and degradation of CREM isoform ICERIIgamma and ATF15 resulting in abrogation of ICERIIgamma- and ATF5-mediated repression of cAMP-induced transcription during both meiotic and mitotic cell cycles. Involved in the regulation of the cell cycle G2/M phase through its targeting of the WEE1 kinase for ubiquitination and degradation.

**Product:**

50mM Tris-Glycine(pH 7.4), 0.15M NaCl, 40% Glycerol, 0.01% Sodium azide and 0.05% BSA

**Molecular Weight:**

Calculated MW: 27 kDa; Observed MW: 32 kDa

**Swiss-Prot:**

P49427

**Purification&Purity:**

Affinity Purified

**Applications:**

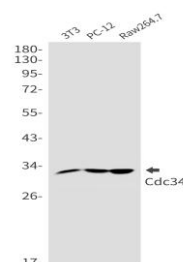
WB: 1/500-1/1000 IP: 1/20

**Storage&Stability:**

Store at 4 °C short term. Aliquot and store at -20 °C long term. Avoid freeze-thaw cycles.

**Isotype:**

IgG

**DATA:**


Western blot analysis of Cdc34 in 3T3, PC-12, Raw264.7 lysates using CDC34 antibody.

Western blot analysis of Cdc34 in HL-60, U251, U87-MG lysates using Cdc34 antibody.

**Note:**

For research use only, not for use in diagnostic procedure.

**Bioworld Technology, Inc.**

Add: 1660 South Highway 100, Suite 500 St. Louis Park, MN 55416, USA.

Email: [info@bioworld.com](mailto:info@bioworld.com)

Tel: 6123263284

Fax: 6122933841

**Bioworld technology, co. Ltd.**

Add: No 9, weidi road Qixia District Nanjing, 210046, P. R. China.

Email: [info@biogol.com](mailto:info@biogol.com)

Tel: 0086-025-68037686

Fax: 0086-025-68035151