

## alpha 1-Antitrypsin monoclonal antibody

Catalog: MB11913

Host: Rabbit

Reactivity: Human

### BackGround:

SERPINA1 is secreted and is a serine protease inhibitor which its targets include elastase, plasmin, collagenase, thrombin, leucocytic proteases, trypsin, chymotrypsin, and plasminogen activator. Inhibitor of serine proteases. Its primary target is elastase, but it also has a moderate affinity for plasmin and thrombin.

### Product:

50mM Tris-Glycine(pH 7.4), 0.15M NaCl, 40% Glycerol, 0.01% Sodium azide and 0.05% BSA

### Molecular Weight:

Calculated MW: 47 kDa; Observed MW: 55 kDa

### Swiss-Prot:

P01009

### Purification&Purity:

Affinity Purified

### Applications:

WB: 1/500-1/1000 IP: 1/20

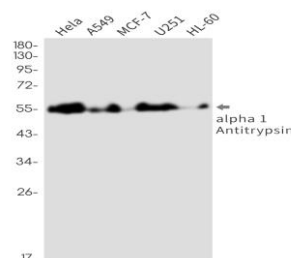
### Storage&Stability:

Store at 4 °C short term. Aliquot and store at -20 °C long term. Avoid freeze-thaw cycles.

### Isotype:

IgG

### DATA:



Western blot analysis of alpha 1 Antitrypsin in HeLa, A549, MCF-7, U251, HL-60 lysates using alpha 1-Antitrypsin antibody.

### Note:

For research use only, not for use in diagnostic procedure.

### Bioworld Technology, Inc.

Add: 1660 South Highway 100, Suite 500 St. Louis Park, MN 55416, USA.

Email: [info@bioworld.com](mailto:info@bioworld.com)

Tel: 6123263284

Fax: 6122933841

### Bioworld technology, co. Ltd.

Add: No 9, weidi road Qixia District Nanjing, 210046, P. R. China.

Email: [info@biogol.com](mailto:info@biogol.com)

Tel: 0086-025-68037686

Fax: 0086-025-68035151