

Rab22A monoclonal antibody

Catalog: MB11491

Host: Rabbit

Reactivity: Human, Mouse, Rat

BackGround:

Plays a role in endocytosis and intracellular protein transport. Mediates trafficking of TF from early endosomes to recycling endosomes (PubMed:16537905). Required for NGF-mediated endocytosis of NTRK1, and subsequent neurite outgrowth (PubMed:21849477). Binds GTP and GDP and has low GTPase activity. Alternates between a GTP-bound active form and a GDP-bound inactive form (PubMed:16537905).

Product:

50mM Tris-Glycine(pH 7.4), 0.15M NaCl, 40% Glycerol, 0.01% Sodium azide and 0.05% BSA

Molecular Weight:

Calculated MW: 22 kDa; Observed MW: 22 kDa

Swiss-Prot:

Q9UL26

Purification&Purity:

Affinity Purified

Applications:

WB: 1/500-1/1000 IP: 1/20

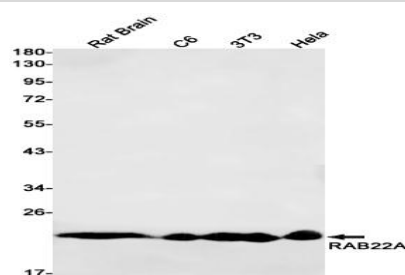
Storage&Stability:

Store at 4 °C short term. Aliquot and store at -20 °C long term. Avoid freeze-thaw cycles.

Isotype:

IgG

DATA:



Western blot analysis of RAB22A in rat Brain, C6, 3T3, HeLa lysates using Rab22A antibody.

Note:

For research use only, not for use in diagnostic procedure.

Bioworld Technology, Inc.

Add: 1660 South Highway 100, Suite 500 St. Louis Park, MN 55416, USA.

Email: info@bioworld.com

Tel: 6123263284

Fax: 6122933841

Bioworld technology, co. Ltd.

Add: No 9, weidi road Qixia District Nanjing, 210046, P. R. China.

Email: info@biogol.com

Tel: 0086-025-68037686

Fax: 0086-025-68035151