

## PEF1 monoclonal antibody

Catalog: MB11392

Host: Rabbit

Reactivity: Human, Mouse, Rat

### BackGround:

Calcium-binding protein that acts as an adapter that bridges unrelated proteins or stabilizes weak protein-protein complexes in response to calcium. Together with PDCD6, acts as calcium-dependent adapter for the BCR(KLHL12) complex, a complex involved in endoplasmic reticulum (ER)-Golgi transport by regulating the size of COPII coats (PubMed:27716508). In response to cytosolic calcium increase, the heterodimer formed with PDCD6 interacts with, and bridges together the BCR(KLHL12) complex and SEC31 (SEC31A or SEC31B), promoting monoubiquitination of SEC31 and subsequent collagen export, which is required for neural crest specification (PubMed:27716508). Its role in the heterodimer formed with PDCD6 is however unclear: some evidences show that PEF1 and PDCD6 work together and promote association between PDCD6 and SEC31 in presence of calcium (PubMed:27716508). Other reports show that PEF1 dissociates from PDCD6 in presence of calcium, and may act as a negative regulator of PDCD6 (PubMed:11278427). Also acts as a negative regulator of ER-Golgi transport; possibly by inhibiting interaction between PDCD6 and SEC31.

### Product:

50mM Tris-Glycine(pH 7.4), 0.15M NaCl, 40% Glycerol, 0.01% Sodium azide and 0.05% BSA

### Molecular Weight:

Calculated MW: 30 kDa; Observed MW: 30 kDa

### Swiss-Prot:

Q9UBV8

### Purification&Purity:

Affinity Purified

### Applications:

WB: 1/500-1/1000 IP: 1/20

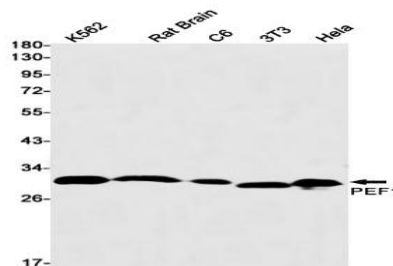
### Storage&Stability:

Store at 4 °C short term. Aliquot and store at -20 °C long term. Avoid freeze-thaw cycles.

### Isotype:

IgG

### DATA:



Western blot analysis of PEF1 in K562, rat Brain, C6, 3T3, HeLa lysates using PEF1 antibody.

### Note:

For research use only, not for use in diagnostic procedure.

### Bioworld Technology, Inc.

Add: 1660 South Highway 100, Suite 500 St. Louis Park, MN 55416, USA.

Email: [info@bioworld.com](mailto:info@bioworld.com)

Tel: 6123263284

Fax: 6122933841

### Bioworld technology, co. Ltd.

Add: No 9, weidi road Qixia District Nanjing, 210046, P. R. China.

Email: [info@biogol.com](mailto:info@biogol.com)

Tel: 0086-025-68037686

Fax: 0086-025-68035151