

Phospho-PAK1/2/3 (Ser144/Ser141/Ser154) monoclonal antibody

Catalog: MB11368

Host: Rabbit

Reactivity: Human, Mouse, Rat

BackGround:

PAK proteins are critical effectors that link Rho GTPases to cytoskeleton reorganization and nuclear signaling. PAK proteins serve as targets for the small GTP binding proteins Cdc42 and RAC and have been implicated in a wide range of biological activities. PAK3 forms an activated complex with GTP-bound RAS-like (P21), CDC2 and RAC1 proteins which then catalyzes a variety of targets.

Product:

50mM Tris-Glycine(pH 7.4), 0.15M NaCl, 40% Glycerol, 0.01% Sodium azide and 0.05% BSA

Molecular Weight:

Calculated MW: 62 kDa; Observed MW: 62 kDa

Swiss-Prot:

O75914

Purification&Purity:

Affinity Purified

Applications:

WB: 1/500-1/1000 IHC: 1/50-1/100 IF: 1/50-1/200
IP: 1/20

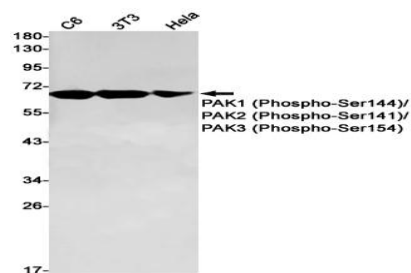
Storage&Stability:

Store at 4 °C short term. Aliquot and store at -20 °C long term. Avoid freeze-thaw cycles.

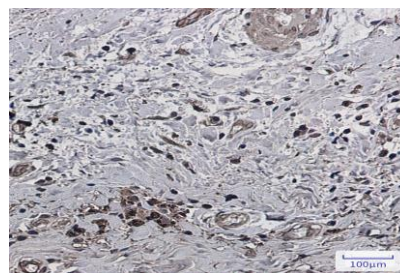
Isotype:

IgG

DATA:



Western blot analysis of PAK1 /PAK2 /PAK3 in C6, 3T3, HeLa lysates using Phospho-PAK1/2/3 antibody.



Immunocytochemistry analysis of PAK1 /PAK2 /PAK3 in HeLa using PAK1 /PAK2 /PAK3 antibody, and DAPI

Immunohistochemistry analysis of paraffin-embedded Human breast cancer using Phospho-PAK1/2/3 antibody. High-pressure and temperature Sodium Citrate pH 6.0 was used for antigen retrieval.

Note:

For research use only, not for use in diagnostic procedure.

Bioworld Technology, Inc.

Add: 1660 South Highway 100, Suite 500 St. Louis Park, MN 55416, USA.

Email: info@bioworld.com

Tel: 6123263284

Fax: 6122933841

Bioworld technology, co. Ltd.

Add: No 9, weidi road Qixia District Nanjing, 210046, P. R. China.

Email: info@biogot.com

Tel: 0086-025-68037686

Fax: 0086-025-68035151