

## NAT1 monoclonal antibody

Catalog: MB11267

Host: Rabbit

Reactivity: Human, Mouse, Rat

### BackGround:

Participates in the detoxification of a plethora of hydrazine and arylamine drugs. Catalyzes the N- or O-acetylation of various arylamine and heterocyclic amine substrates and is able to bioactivate several known carcinogens. Miscellaneous NAT1 was historically considered to be monomorphic in nature but reports of allelic variations at the NAT1 locus suggest that it is a polymorphically expressed enzyme. Caution The allelic variation Ile-149 designated as NAT1\*17 is part of the NAT1\*11 allelic variation as reported by the nomenclature committee.

### Product:

50mM Tris-Glycine (pH 7.4), 0.15M NaCl, 40% Glycerol, 0.01% Sodium azide and 0.05% BSA

### Molecular Weight:

Calculated MW: 34 kDa; Observed MW: 34 kDa

### Swiss-Prot:

P18440

### Purification&Purity:

Affinity Purified

### Applications:

WB: 1/500-1/1000

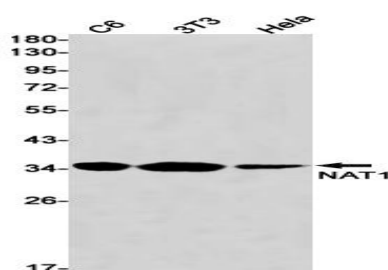
### Storage&Stability:

Store at 4 °C short term. Aliquot and store at -20 °C long term. Avoid freeze-thaw cycles.

### Isotype:

IgG

### DATA:



Western blot analysis of NAT1 in C6, 3T3, HeLa lysates using NAT1 antibody.

### Note:

For research use only, not for use in diagnostic procedure.

### Bioworld Technology, Inc.

Add: 1660 South Highway 100, Suite 500 St. Louis Park, MN 55416, USA.

Email: [info@bioworld.com](mailto:info@bioworld.com)

Tel: 6123263284

Fax: 6122933841

### Bioworld technology, co. Ltd.

Add: No 9, weidi road Qixia District Nanjing, 210046, P. R. China.

Email: [info@biogol.com](mailto:info@biogol.com)

Tel: 0086-025-68037686

Fax: 0086-025-68035151