

LRRC15 monoclonal antibody

Catalog: MB11177

Host: Rabbit

Reactivity: Mouse, Rat

BackGround:

Enables collagen binding activity; fibronectin binding activity; and laminin binding activity. Involved in negative regulation of protein localization to plasma membrane; positive regulation of cell migration; and receptor-mediated virion attachment to host cell. Located in extracellular exosome. Colocalizes with collagen-containing extracellular matrix.

Product:

50mM Tris-Glycine(pH 7.4), 0.15M NaCl, 40% Glycerol, 0.01% Sodium azide and 0.05% BSA

Molecular Weight:

Calculated MW: 64 kDa; Observed MW: 64 kDa

Swiss-Prot:

Q8TF66

Purification&Purity:

Affinity Purified

Applications:

WB: 1/500-1/1000

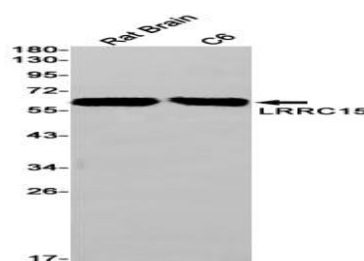
Storage&Stability:

Store at 4 °C short term. Aliquot and store at -20 °C long term. Avoid freeze-thaw cycles.

Isotype:

IgG

DATA:



Western blot analysis of LRRC15 in rat Brain, C6 lysates using LRRC15 antibody.

Note:

For research use only, not for use in diagnostic procedure.

Bioworld Technology, Inc.

Add: 1660 South Highway 100, Suite 500 St. Louis Park, MN 55416, USA.

Email: info@bioworld.com

Tel: 6123263284

Fax: 6122933841

Bioworld technology, co. Ltd.

Add: No 9, weidi road Qixia District Nanjing, 210046, P. R. China.

Email: info@biogot.com

Tel: 0086-025-68037686

Fax: 0086-025-68035151