

KDM1A monoclonal antibody

Catalog: MB11143

Host: Rabbit

Reactivity: Human, Hamster, Rat

Background:

Histone demethylase that demethylates both 'Lys-4' (H3K4me) and 'Lys-9' (H3K9me) of histone H3, thereby acting as a coactivator or a corepressor, depending on the context. Acts by oxidizing the substrate by FAD to generate the corresponding imine that is subsequently hydrolyzed. Acts as a corepressor by mediating demethylation of H3K4me, a specific tag for epigenetic transcriptional activation. Demethylates both mono- (H3K4me1) and di-methylated (H3K4me2) H3K4me. May play a role in the repression of neuronal genes.

Product:

50mM Tris-Glycine (pH 7.4), 0.15M NaCl, 40% Glycerol, 0.01% Sodium azide and 0.05% BSA

Molecular Weight:

Calculated MW: 93 kDa; Observed MW: 110 kDa

Swiss-Prot:

O60341

Purification & Purity:

Affinity Purified

Applications:

WB: 1/500-1/1000 IF: 1/50-1/200 IP: 1/20

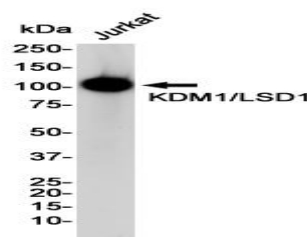
Storage & Stability:

Store at 4 °C short term. Aliquot and store at -20 °C long term. Avoid freeze-thaw cycles.

Isotype:

IgG

DATA:



Western blot analysis of KDM1/LSD1 in Jurkat lysates using KDM1A antibody.

Western blot analysis of KDM1/LSD1 in HeLa, CHO-K1, C6, Jurkat lysates using KDM1/LSD1 antibody.

Immunocytochemistry analysis of KDM1/LSD1 in HeLa using KDM1/LSD1 antibody, and DAPI

Note:

For research use only, not for use in diagnostic procedure.

Bioworld Technology, Inc.

Add: 1660 South Highway 100, Suite 500 St. Louis Park, MN 55416, USA.

Email: info@bioworld.com

Tel: 6123263284

Fax: 6122933841

Bioworld technology, co. Ltd.

Add: No 9, weidi road Qixia District Nanjing, 210046, P. R. China.

Email: info@biogot.com

Tel: 0086-025-68037686

Fax: 0086-025-68035151