

## Phospho-IGF1 Receptor (Tyr1166) monoclonal antibody

Catalog: MB11111

Host: Rabbit

Reactivity: Human, Mouse, Rat

### BackGround:

This receptor binds insulin-like growth factor with a high affinity. It has tyrosine kinase activity. The insulin-like growth factor I receptor plays a critical role in transformation events. Cleavage of the precursor generates alpha and beta subunits. It is highly overexpressed in most malignant tissues where it functions as an anti-apoptotic agent by enhancing cell survival. Alternatively spliced transcript variants encoding distinct isoforms have been found for this gene. [provided by RefSeq, May 2014]

### Product:

50mM Tris-Glycine(pH 7.4), 0.15M NaCl, 40% Glycerol, 0.01% Sodium azide and 0.05% BSA

### Molecular Weight:

Calculated MW: 155 kDa; Observed MW: 95 kDa

### Swiss-Prot:

P08069

### Purification&Purity:

Affinity Purified

### Applications:

WB: 1/500-1/1000 IP: 1/20

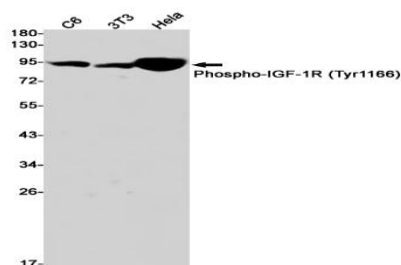
### Storage&Stability:

Store at 4 °C short term. Aliquot and store at -20 °C long term. Avoid freeze-thaw cycles.

### Isotype:

IgG

### DATA:



Western blot analysis of Phospho-IGF1R in C6, 3T3, HeLa lysates using Phospho-IGF1 Receptor antibody.

### Note:

For research use only, not for use in diagnostic procedure.

### Bioworld Technology, Inc.

Add: 1660 South Highway 100, Suite 500 St. Louis Park, MN 55416, USA.

Email: [info@bioworld.com](mailto:info@bioworld.com)

Tel: 6123263284

Fax: 6122933841

### Bioworld technology, co. Ltd.

Add: No 9, weidi road Qixia District Nanjing, 210046, P. R. China.

Email: [info@biogol.com](mailto:info@biogol.com)

Tel: 0086-025-68037686

Fax: 0086-025-68035151