

## Glycogen Synthase 1 monoclonal antibody

Catalog: MB10988

Host: Rabbit

Reactivity: Human, Rat

### BackGround:

Transfers the glycosyl residue from UDP-Glc to the non-reducing end of alpha-1,4-glucan. Allosteric activation by glucose-6-phosphate. Phosphorylation reduces the activity towards UDP-glucose. When in the non-phosphorylated state, glycogen synthase does not require glucose-6-phosphate as an allosteric activator; when phosphorylated it does.

### Product:

50mM Tris-Glycine(pH 7.4), 0.15M NaCl, 40% Glycerol, 0.01% Sodium azide and 0.05% BSA

### Molecular Weight:

Calculated MW: 84 kDa; Observed MW: 84 kDa

### Swiss-Prot:

P13807

### Purification&Purity:

Affinity Purified

### Applications:

WB: 1/500-1/1000 IF: 1/50-1/200 IP: 1/20

### Storage&Stability:

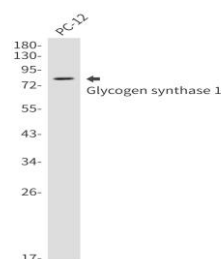
Store at 4 °C short term. Aliquot and store at -20 °C long

term. Avoid freeze-thaw cycles.

### Isotype:

IgG

### DATA:



Western blot analysis of Glycogen synthase 1 in PC-12 lysates using Glycogen Synthase 1 antibody.

Western blot analysis of Glycogen synthase 1 in Hela lysates using Glycogen synthase 1 antibody.

Immunocytochemistry analysis of Glycogen synthase 1 in Hela using Glycogen synthase 1 antibody, and DAPI

### Note:

For research use only, not for use in diagnostic procedure.

### Bioworld Technology, Inc.

Add: 1660 South Highway 100, Suite 500 St. Louis Park, MN 55416, USA.

Email: [info@bioworld.com](mailto:info@bioworld.com)

Tel: 6123263284

Fax: 6122933841

### Bioworld technology, co. Ltd.

Add: No 9, weidi road Qixia District Nanjing, 210046, P. R. China.

Email: [info@biogol.com](mailto:info@biogol.com)

Tel: 0086-025-68037686

Fax: 0086-025-68035151