

ENSA monoclonal antibody

Catalog: MB10880

Host: Rabbit

Reactivity: Human, Mouse, Rat

BackGround:

Protein phosphatase inhibitor that specifically inhibits protein phosphatase 2A (PP2A) during mitosis. When phosphorylated at Ser-67 during mitosis, specifically interacts with PPP2R2D (PR55-delta) and inhibits its activity, leading to inactivation of PP2A, an essential condition to keep cyclin-B1-CDK1 activity high during M phase. Also acts as a stimulator of insulin secretion by interacting with sulfonylurea receptor (ABCC8), thereby preventing sulfonylurea from binding to its receptor and reducing K(ATP) channel currents.

Product:

50mM Tris-Glycine(pH 7.4), 0.15M NaCl, 40% Glycerol, 0.01% Sodium azide and 0.05% BSA

Molecular Weight:

Calculated MW: 13 kDa; Observed MW: 13 kDa

Swiss-Prot:

O43768

Purification&Purity:

Affinity Purified

Applications:

WB: 1/500-1/1000

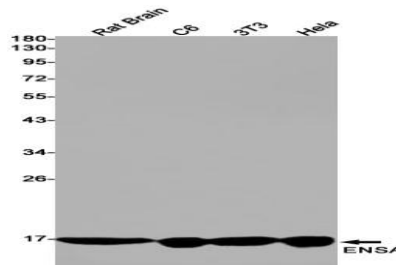
Storage&Stability:

Store at 4 °C short term. Aliquot and store at -20 °C long term. Avoid freeze-thaw cycles.

Isotype:

IgG

DATA:



Western blot analysis of ENSA in rat Brain, C6, 3T3, HeLa lysates using ENSA antibody.

Note:

For research use only, not for use in diagnostic procedure.

Bioworld Technology, Inc.

Add: 1660 South Highway 100, Suite 500 St. Louis Park, MN 55416, USA.

Email: info@bioworld.com

Tel: 6123263284

Fax: 6122933841

Bioworld technology, co. Ltd.

Add: No 9, weidi road Qixia District Nanjing, 210046, P. R. China.

Email: info@biogol.com

Tel: 0086-025-68037686

Fax: 0086-025-68035151